

# 44-2600 Series

## Regulators - Pressure Reducing

D44261794X012

### Specifications

For other materials or modifications, please consult TESCOM.

#### OPERATING PARAMETERS

Pressure rating per criteria of ANSI/ASME B31.3

**Maximum Inlet Pressure**

400 or 3500 psig / 27.6 or 241 bar

**Outlet Pressure Ranges**

0-12, 0-25, 0-50, 0-100, 0-150,  
0-250 psig (400 psig inlet models only)  
0-0.83, 0-1.7, 0-3.4, 0-6.9, 0-10.3,  
0-17.2 bar (27.6 bar inlet models only)

**Design Proof Pressure**

150% of maximum rated

**Leakage**

**Internal:** Bubble-tight

**External:** Design to meet  $\leq 2 \times 10^{-8}$  atm cc/sec He

**Operating Temperature**

-40°F to 165°F / -40°C to 74°C

**Flow Capacity**

**3500 psig / 241 bar Inlet:**  $C_v = 0.06$

**400 psig / 27.6 bar Inlet:**  $C_v = 0.15$



TESCOM 44-2600 Series is a compact, extremely sensitive, high purity single-stage regulator for specialty, flammable and industrial gases with flows of less than 10 SCFM / 283 SLPM. Diffusion-resistant metal diaphragm seal ensures gas purity and integrity.

#### MEDIA CONTACT MATERIALS

**Body**

316 Stainless Steel

**Bonnet**

303 Stainless Steel

**Diaphragm**

316 Stainless Steel

**Seat**

Teflon®

**Friction Sleeve (inner)**

Teflon®

**Remaining Parts**

316 Stainless Steel

#### OTHER

**Cleaning**

CGA 4.1 AND ASTM G93

**Weight**

3 lbs / 1.4 kg

Teflon® is a registered trademark of E.I. du Pont de Nemours and Company.

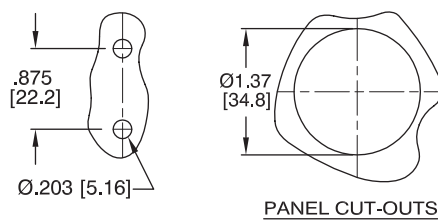
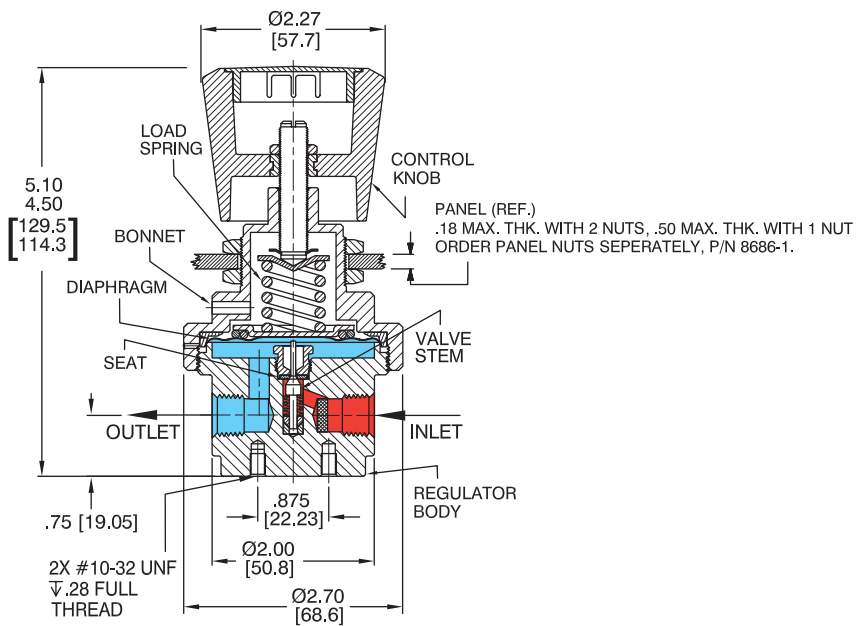
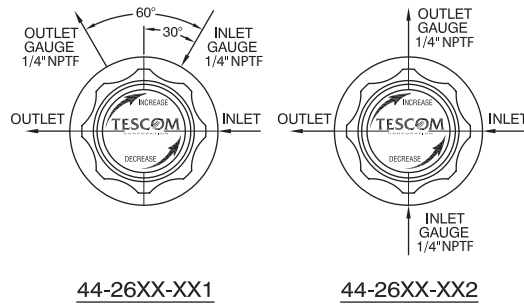
### Applications

- Gas/Analyzer sampling systems
- Fuel cells
- Tissue and cell culture incubators
- Chromatograph flame detector fuel supply
- Excellent for low outlet and low differential pressure applications

### Features and Benefits

- Features a large convoluted diaphragm for extreme sensitivity with minimum droop
- Repeatability:  $\pm 0.5\%$  of outlet pressure range
- Metal-to-metal diaphragm to body seal
- Accuracy:  $\pm 1\%$  of outlet pressure range
- Gauge ports are standard
- Dome loaded version is available
- $C_v = 0.02$  and  $C_v = 0.24$  models are available
- NACE compliant designs are available

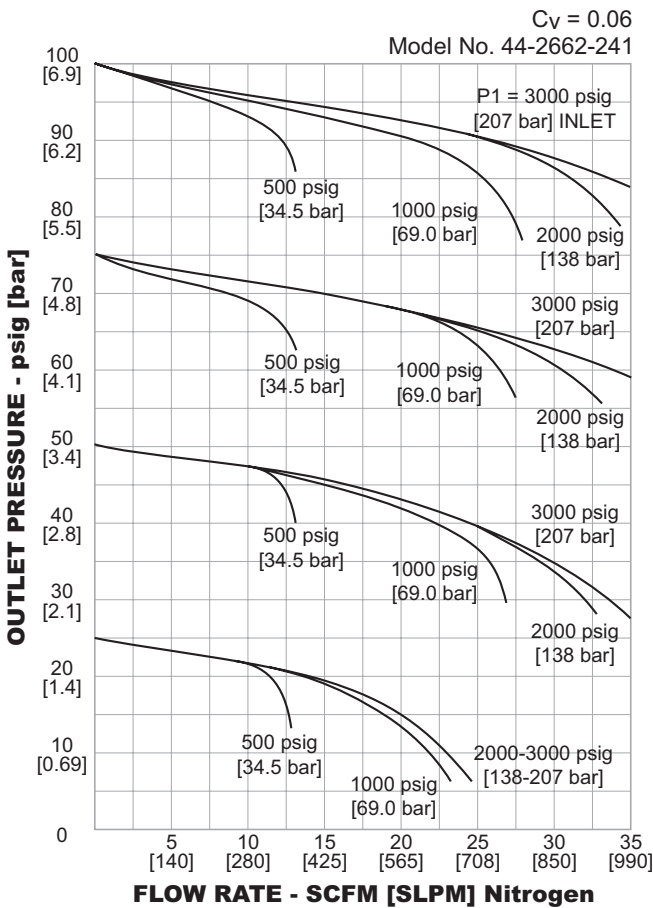
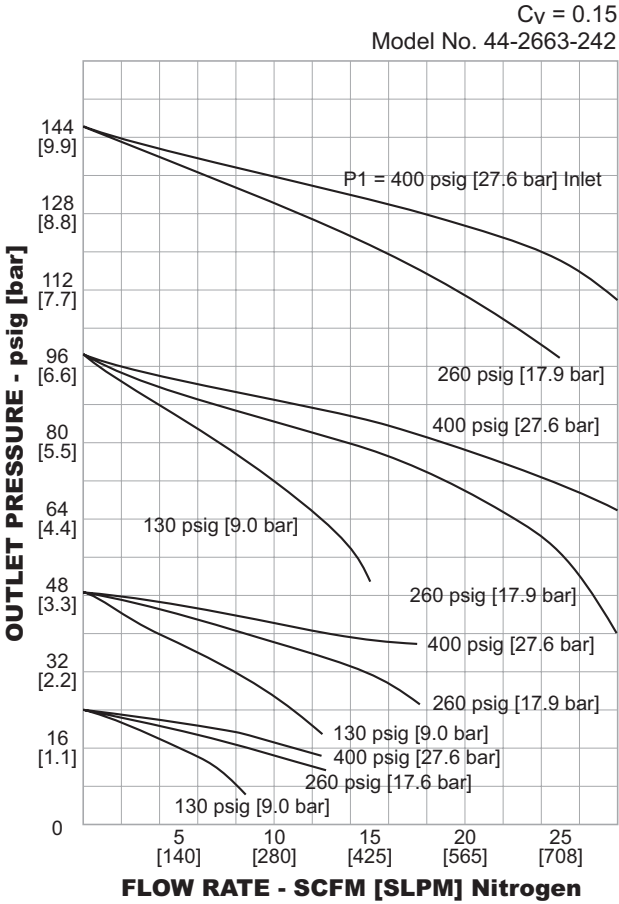
**44-2600 Series Regulator Drawing**



All dimensions are reference & nominal  
Metric [millimeter] equivalents are in brackets

44-2600 Series Regulator Flow Charts

For more information on how to read flow curves, please refer to the Flow Curves and Calculations document (debul2007x012) in the TESCOM catalog or on www.tescom.com.



## 44-2600 Series Regulator Part Number Selector

**i Learn more about common options.**

For modifications, repair kits and accessories, contact factory.

Example for selecting a part number:

44-26                  6                                  1                                  -                                  2                                  4                                  1

BASIC SERIES	BODY MATERIAL	OUTLET PRESSURE RANGES	INLET AND OUTLET PORT TYPE	INLET AND OUTLET PORT SIZE	MAXIMUM INLET PRESSURE
44-26	6 – 316 Stainless Steel	L – 0-12 psig / 0-0.82 bar 0 – 0-25 psig / 0-1.7 bar 1 – 0-50 psig / 0-3.4 bar 2 – 0-100 psig / 0-6.9 bar 3 – 0-150 psig / 0-10.3 bar 4 – 0-250 psig / 0-17.2 bar*	2 – NPTF	4 – 1/4"	1 – 3500 psig / 241 bar 2 – 400 psig / 27.6 bar
			*Available for 400 psig / 27.6 bar maximum inlet pressure only.		



**WARNING!** Do not attempt to select, install, use or maintain this product until you have read and fully understood the *TESCOM Safety, Installation and Operation Precautions*.

D44261794X012 © 2012, 2017 Emerson Process Management Regulator Technologies, Inc. All rights reserved. 08/2017.  
 Tescom, Emerson Process Management, and the Emerson Process Management design are marks of one of the Emerson Process Management group of companies. All other marks are the property of their respective owners.

