

Hy-Lok ZCO O-Ring Face Seal Fittings

Catalog No. H-260CF
Jan. 2006



FEATURES

- Zero Clearance
- Vacuum to High Pressure
- Wide Temperature Range Up to 550°F
- Easy Installation and Maintenance
- Safety Leak Test Ports

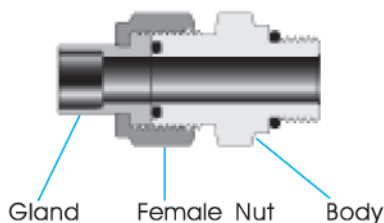
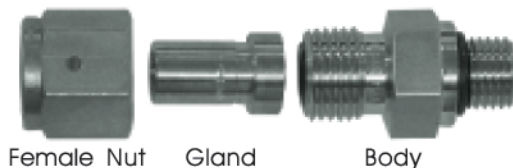
MATERIAL

Bodies Glands and Nuts - 316 stainless steel
Automatic Tube Weld Fittings - 316L stainless steel
O-RING-70 durometer fluorocarbon (Viton) is standard on ZCO bodies. 90 durometer fluorocarbon is used with SAE/MS threads. Other materials are available upon request with temperature range belows are;

Material	Temperature Rating	Designator
Fluorocarbon	400°F (200°C)	
Buna N	250°F (120°C)	BU
PTFE	450°F (230°C)	PE
Perfluoroelastomer	550°F (280°C)	KA
Ethylene-propylene	300°F (140°C)	EP

TYPICAL ASSEMBLY

ZCO assemblies are made up of three basic components



TECHNICAL DATA

Pressure Ratings

Pressure ratings published in the this catalog are calculated in accordance with Power Piping Code ANSI B31.1

Testing

ZCO assemblies have been consistently helium leak tested to a rate of 4×10^{-9} std cm³/s. without leakage.

Dimensions

For reference only, subject to change.

O-ring Uniform Size Number

Use chart below to find O-ring Uniform size number of components listed in this catalog.

ZCO Component Size	O-ring Uniform Size Number
ZCO - 4	010
ZCO - 8	111
ZCO - 12	116
ZCO - 16	215

COMPONENTS LOCATION

Nuts	page 2
Glands	page 2,3
Bodies	page 3,4,5,6,7
Swivel Bodies	page 7,8
Installation Instruction	page 8
Ordering Information	page 8



HY-LOK CORPORATION

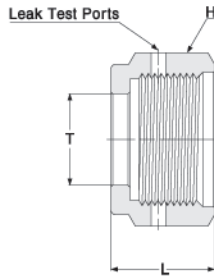
© 2002, 2006 HY-LOK CORPORATION All rights reserved

Hy-Lok ZCO O-Ring Face Seal Fittings

NUTS

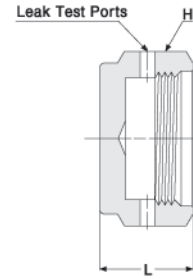
Female Nut

Connects a ZCO gland and body.



Blind Nut

Seals a ZCO body.

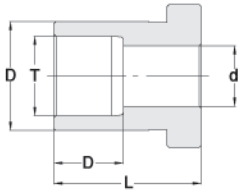


Part Number	ZCO Size in	L		H Hex Flat
		in. (mm)		
H-ZCOFN - 4	1/4	0.66 (16.76)	0.40 (10.16)	11/16"
H-ZCOFN - 8	1/2	0.69 (17.53)	0.61 (15.49)	1"
H-ZCOFN - 12	3/4	0.81 (20.57)	0.94 (23.88)	1-1/2"
H-ZCOFN - 16	1	0.81 (20.57)	1.25 (31.75)	1-3/4"

Part Number	ZCO Size in	L		H Hex Flat
		in. (mm)		
H-ZCOBN - 4	1/4	0.44 (11.18)		11/16"
H-ZCOBN - 8	1/2	0.56 (14.22)		1"
H-ZCOBN - 12	3/4	0.75 (19.05)		1-1/2"
H-ZCOBN - 16	1	0.81 (20.57)		1-3/4"

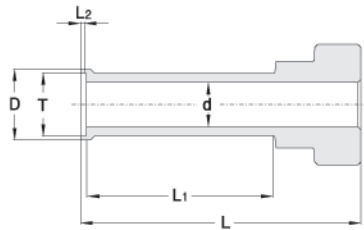
GLANDS Adapt tubing to ZCO O-ring face seal.

Socket Weld Gland



Part Number	ZCO Size in	T Tube O.D.	D	d	L		Working Pressure	
					in. (mm)		psig	bar
H-ZCOSWG - 2	1/8	1/8"	0.38 (9.65)	0.09 (2.29)	0.77 (19.56)	0.10 (2.54)	15400	1060
H-ZCOSWG - 4	1/4	1/4"	0.38 (9.65)	0.18 (4.57)	0.77 (19.56)	0.28 (7.11)	6800	460
H-ZCOSWG - 6	1/2	3/8"	0.60 (15.24)	0.28 (7.11)	0.81 (20.57)	0.31 (7.87)	8100	560
H-ZCOSWG - 8	1/2	1/2"	0.60 (15.24)	0.40 (10.16)	0.81 (20.57)	0.38 (9.65)	3000	200
H-ZCOSWG - 12	3/4	3/4"	0.92 (23.37)	0.62 (15.75)	0.94 (23.88)	0.44 (11.17)	3700	250
H-ZCOSWG - 16	1	1"	1.19 (30.23)	0.87 (22.10)	0.98 (24.90)	0.62 (15.75)	3000	200

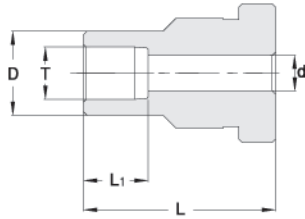
Automatic Tube Weld Gland



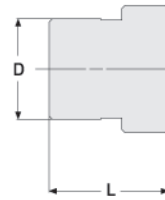
Part Number	ZCO Size in	T Tube O.D.	D	d	L	L ₁	L ₂	Nominal Wall Thickness	Working Pressure	
									in. (mm)	
H-ZCOTWG- 4A	1/4	1/4"	0.29 (7.37)	0.18 (4.57)	1.12 (28.45)	0.75 (19.05)	0.02 (0.51)	0.035"	5100	350
H-ZCOTWG- 6A	1/2	3/8"	0.41 (10.41)	0.31 (7.87)	1.13 (28.70)	0.75 (19.05)	0.03 (0.76)	0.035"	3300	220
H-ZCOTWG- 8A	1/2	1/2"	0.55 (13.97)	0.40 (10.16)	1.14 (28.96)	0.75 (19.05)	0.04 (1.02)	0.049"	3500	240
H-ZCOTWG-12A	3/4	3/4"	0.80 (20.32)	0.65 (16.51)	1.20 (30.48)	0.75 (19.05)	0.04 (1.02)	0.049"	2100	150
H-ZCOTWG-16A	1	1"	1.06 (26.92)	0.87 (22.10)	1.41 (35.81)	0.96 (24.38)	0.04 (1.02)	0.065"	2100	150

Hy-Lok ZCO O-Ring Face Seal Fittings

Socket weld Reducing Gland



Blind Gland



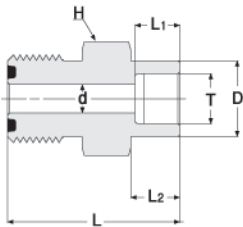
Part Number	ZCO Size in	T Tube O.D.	D	d	L	L ₁	Working Pressure	
			in. (mm)				psig	bar
H-ZCOSWRG4-2	1/4	1/8"	0.29 (7.37)	0.09 (2.29)	0.77 (19.56)	0.10 (2.54)	12600	860
H-ZCOSWRG8-4	1/2	1/4"	0.48 (12.19)	0.18 (4.57)	0.81 (20.57)	0.28 (7.11)	10700	730

Part Number	ZCO Size in	D	L
		in. (mm)	
H-ZCOBG- 4	1/4	0.38 (9.65)	0.44 (11.18)
H-ZCOBG- 8	1/2	0.60 (15.24)	0.44 (11.18)
H-ZCOBG- 12	3/4	0.92 (23.37)	0.50 (12.7)
H-ZCOBG- 16	1	1.19 (30.23)	0.50 (12.7)

BODIES

Socket Weld Connector

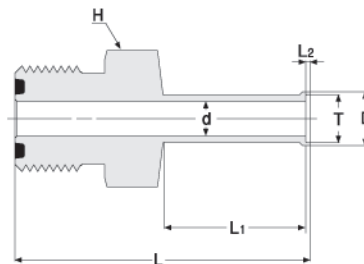
Adapts tubing to ZCO gland.



Part Number	ZCO Size in	T Tube O.D.	D	d	L	L ₁	L ₂	H Hex Flat	Working Pressure	
			in. (mm)						psig	bar
H-ZCOSWC- 2	1/8	1/8"	0.29 (7.37)	0.09 (2.29)	0.88 (22.35)	0.10 (2.54)	0.10 (2.54)	5/8"	12600	860
H-ZCOSWC- 4	1/4	1/4"	0.38 (9.65)	0.18 (4.57)	1.09 (27.69)	0.28 (7.11)	0.31 (7.87)	5/8"	6800	460
H-ZCOSWC- 6	1/2	3/8"	0.60 (15.24)	0.28 (7.11)	1.28 (32.51)	0.31 (7.87)	0.38 (9.65)	15/16"	8100	560
H-ZCOSWC- 8	1/2	1/2"	0.73 (18.50)	0.40 (10.16)	1.34 (34.04)	0.38 (9.65)	0.44 (11.18)	15/16"	3000	200
H-ZCOSWC- 12	3/4	3/4"	0.92 (23.37)	0.62 (15.75)	1.50 (38.10)	0.44 (11.18)	0.50 (12.7)	1-5/16"	3700	250
H-ZCOSWC- 16	1	1"	1.19 (30.23)	0.87 (22.10)	1.72 (43.69)	0.62 (15.75)	0.69 (17.53)	1-5/8"	3000	200

Automatic Tube Weld Connector

Adapts tubings to ZCO gland.

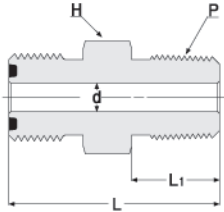


Part Number	ZCO Size in	T Tube O.D.	D	d	L	L ₁	L ₂	H Hex Flat	Nominal Wall Thickness	Working Pressure	
			in. (mm)							psig	bar
H-ZCOTWC- 4A	1/4	1/4"	0.29 (7.37)	0.18 (4.57)	1.59(40.39)	0.75(19.05)	0.02(0.51)	5/8"	0.035"	5100	350
H-ZCOTWC- 6A	1/2	3/8"	0.41(10.41)	0.31(7.87)	1.74(44.20)	0.75(19.05)	0.03(0.76)	15/16"	0.035"	3300	220
H-ZCOTWC- 8A	1/2	1/2"	0.55(13.97)	0.40(10.16)	1.75(44.45)	0.75(19.05)	0.04(1.02)	15/16"	0.049"	3500	240
H-ZCOTWC-12A	3/4	3/4"	0.80(20.32)	0.65(16.51)	1.78(45.21)	0.75(19.05)	0.04(1.02)	15/16"	0.049"	2200	150
H-ZCOTWC-16A	1	1"	1.06(26.92)	0.87(22.01)	2.03(51.56)	0.96(24.38)	0.04(1.02)	1-5/8"	0.065"	2200	150

Hy-Lok ZCO O-Ring Face Seal Fittings

Male Connector

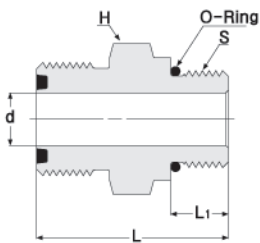
Converts female NPT thread to ZCO gland.



Part Number	ZCO Size in	P Male NPT Size	d	L	L ₁	H Hex Flat	Working Pressure	
			in. (mm)				psig	bar
H-ZCOMC 4- 2N	1/4	1/8"	0.18(4.57)	1.16(29.46)	0.38(9.65)	5/8"	10000	680
H-ZCOMC 4- 4N	1/4	1/4"	0.18(4.57)	1.34(34.04)	0.56(14.22)	5/8"	13400	920
H-ZCOMC 8- 6N	1/2	3/8"	0.38(9.65)	1.46(37.08)	0.56(14.22)	15/16"	7800	530
H-ZCOMC 8- 8N	1/2	1/2"	0.40(10.16)	1.65(41.91)	0.75(19.05)	15/16"	10000	680
H-ZCOMC12-12N	3/4	3/4"	0.62(15.75)	1.75(44.45)	0.75(19.05)	1-5/16"	7300	500
H-ZCOMC16-16N	1	1"	0.87(22.10)	1.97(50.04)	0.94(23.88)	1-5/8"	5300	360

SAE/MS Connector

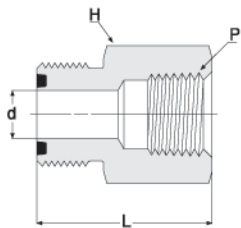
Converts SAE/MS thread boss to ZCO gland.



Part Number	ZCO Size in	S Thread Size	d	L	L ₁	H Hex Flat	O-ring Uniform size Number	Working Pressure	
			in. (mm)					psig	bar
H-ZCOSC 4- 2U	1/4	7/16-20	0.18(4.57)	1.24(31.50)	0.36(9.14)	11/16"	-904	4500	310
H-ZCOSC 4- 6U	1/4	9/16-18	0.18(4.57)	1.17(29.72)	0.39(9.91)	11/16"	-906	4500	310
H-ZCOSC 8- 4U	1/2	7/16-20	0.18(4.57)	1.36(34.54)	0.36(9.14)	15/16"	-904	4500	310
H-ZCOSC 8- 6U	1/2	9/16-18	0.30(7.60)	1.39(35.31)	0.39(9.91)	15/16"	-906	4500	310
H-ZCOSC 8- 8U	1/2	3/4-16	0.40(10.16)	1.47(37.34)	0.44(11.18)	1"	-908	4500	310
H-ZCOSC12-12U	3/4	1-1/16-12	0.62(15.75)	1.73(43.94)	0.59(14.99)	1-3/8"	-912	3600	240
H-ZCOSC16-16U	1	1-5/16-12	0.85(21.60)	1.79(45.47)	0.59(14.99)	1-5/8"	-916	2900	190

Female Connector

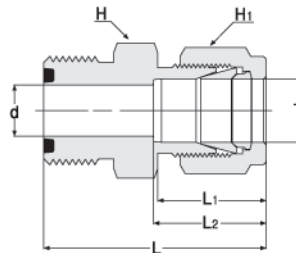
Converts male NPT thread to ZCO gland.



Part Number	ZCO Size in	P Female NPT Size	d	L	H Hex Flat	Working Pressure	
			in. (mm)			psig	bar
H-ZCOFC 4- 2N	1/4	1/8"	0.18(4.57)	1.25(31.75)	5/8"	8400	570
H-ZCOFC 4- 4N	1/4	1/4"	0.18(4.57)	1.39(35.31)	3/4"	6600	450
H-ZCOFC 8- 6N	1/2	3/8"	0.40(10.16)	1.57(39.88)	15/16"	6600	450
H-ZCOFC 8- 8N	1/2	1/2"	0.40(10.16)	1.77(44.96)	1-1/16"	4900	330
H-ZCOFC12-12N	3/4	3/4"	0.62(15.75)	1.93(49.02)	1-5/16"	4600	310
H-ZCOFC16-16N	1	1"	0.87(22.10)	2.02(51.31)	1-5/8"	4400	300

Hy-Lok Tube Fitting Connector

Adapts tubing to ZCO gland.

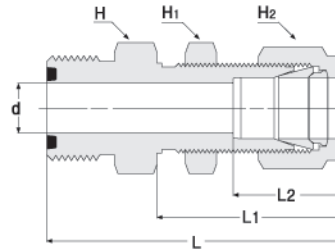


Part Number	ZCO Size in	T Tube O.D.	d	L	L ₁	L ₂	H Hex Flat	H ₁ Hex Flat	Working Pressure	
			in. (mm)						psig	bar
H-ZCOCC 4- 2	1/4	1/8"	0.09(2.29)	1.38(35.05)	0.60(15.24)	0.51(12.95)	5/8"	7/16"	10900	750
H-ZCOCC 4- 4	1/4	1/4"	0.18(4.57)	1.47(37.34)	0.70(17.78)	0.60(15.24)	5/8"	9/16"	10200	700
H-ZCOCC 8- 6	1/2	3/8"	0.28(7.11)	1.65(41.91)	0.76(19.30)	0.66(16.76)	15/16"	11/16"	6500	440
H-ZCOCC 8- 8	1/2	1/2"	0.40(10.16)	1.78(45.21)	0.87(22.10)	0.90(22.86)	15/16"	7/8"	6700	460
H-ZCOCC12-12	3/4	3/4"	0.62(15.75)	1.86(47.24)	0.87(22.10)	0.96(22.38)	1-5/16"	1-1/8"	5800	390
H-ZCOCC16-16	1	1"	0.87(22.10)	2.06(52.32)	1.04(26.42)	1.23(31.24)	1-5/8"	1-1/2"	4700	320

Hy-Lok ZCO O-Ring Face Seal Fittings

Hy-Lok Tube Fitting Bulkhead Connector

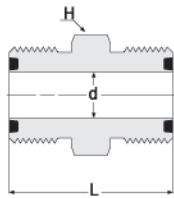
Adapts tubing to ZCO gland.



Part Number	ZCO Size in	T Tube O.D.	d	L	L ₁	L ₂	H Hex Flat	H ₁ Hex Flat	H ₂ Hex Flat	Panel Hole Size	Max. Panel Thickness	Working Pressure	
			in. (mm)									psig	bar
H-ZCOCBHC 4- 4	1/4	1/4"	0.18 (4.57)	2.10(53.34)	1.32(33.53)	0.60(15.24)	5/8"	5/8"	9/16"	29/64"	0.40"	10200	700
H-ZCOCBHC 6- 6	1/2	3/8"	0.28 (7.11)	2.34(59.44)	1.45(36.83)	0.66(16.76)	15/16"	3/4"	11/16"	37/64"	0.44"	6500	440
H-ZCOCBHC 8- 8	1/2	1/2"	0.40(10.16)	2.55(64.77)	1.65(41.91)	0.90(22.86)	15/16"	15/16"	7/8"	49/64"	0.50"	6700	460
H-ZCOCBHC12-12	3/4	3/4"	0.62(15.75)	2.86(72.50)	1.87(47.50)	0.96(24.38)	1-5/16"	1-3/16"	1-1/8"	1-1/64"	0.66"	5800	390
H-ZCOCBHC16-16	1	1"	0.87(22.10)	3.29(83.57)	2.26(57.40)	1.23(31.24)	1-5/8"	1-5/8"	1-1/2"	1-21/64"	0.75"	4700	320

Union

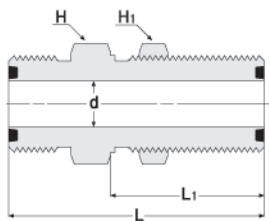
Connects ZCO glands.



Part Number	ZCO Size in	d	L	H Hex Flat	Working Pressure	
		in. (mm)			psig	bar
H-ZCOUA-4	1/4	0.18 (4.57)	1.25 (31.75)	5/8"	14300	980
H-ZCOUA-8	1/2	0.40 (10.16)	1.50 (38.10)	15/16"	11100	760

Bulkhead Union

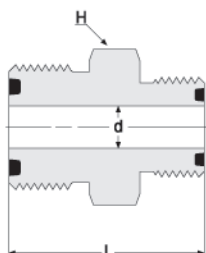
Connects ZCO glands.



Part Number	ZCO Size in	D	d	L	H Hex Flat	H ₁ Hex Flat	Panel Hole Size	Max. Panel Thickness	Working Pressure	
		in. (mm)							psig	bar
H-ZCOBHU-4	1/4	1.06 (26.92)	0.18 (4.57)	1.88 (47.75)	3/4"	3/4"	37/64"	0.36"	14300	980
H-ZCOBHU-8	1/2	1.19 (30.23)	0.40 (10.16)	2.09 (53.09)	1-1/16"	1-1/16"	57/64"	0.40"	11100	760

Reducing Union

Connects ZCO glands.

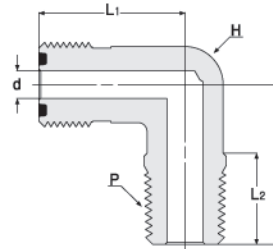


Part Number	ZCO Size in	ZCO Size in	d	L	H Hex Flat	Working Pressure	
			in. (mm)			psig	bar
H-ZCOUR8-4	1/2	1/4	0.18(4.57)	1.43(36.32)	15/16"	11100	760

Hy-Lok ZCO O-Ring Face Seal Fittings

Male Elbow

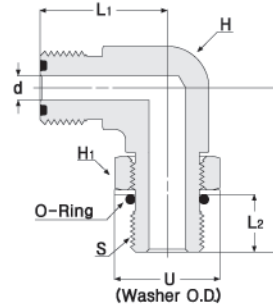
Converts female NPT thread to ZCO gland.



Part Number	ZCO Size in	P Male NPT Size	d	L	L ₁	L ₂	H Wrench Flat	Working Pressure	
								psig	bar
H-ZCOLM 4- 2N	1/4	1/8"	0.18(4.57)	0.87(22.10)	0.96(24.38)	0.38(9.65)	1/2"	10000	680
H-ZCOLM 4- 4N	1/4	1/4"	0.18(4.57)	1.05(26.67)	0.96(24.38)	0.56(14.22)	1/2"	8000	550
H-ZCOLM 8- 6N	1/2	3/8"	0.38(9.65)	1.26(32.00)	1.26(32.00)	0.56(14.22)	13/16"	7800	530
H-ZCOLM 8- 8N	1/2	1/2"	0.40(10.16)	1.45(36.83)	1.26(32.00)	0.75(19.05)	13/16"	7700	530
H-ZCOLM12-12N	3/4	3/4"	0.62(15.75)	1.67(42.42)	1.48(37.59)	0.75(19.05)	1-1/4"	7300	500
H-ZCOLM16-16N	1	1"	0.87(22.10)	1.94(49.28)	1.56(39.62)	0.94(23.88)	1-11/16"	5300	360

SAE/ME Adjustable Elbow

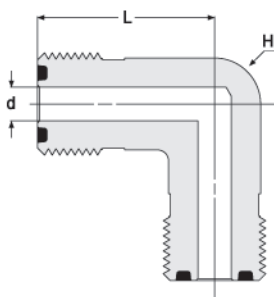
Converts SAE/ME straight thread boss to ZCO gland.



Part Number	ZCO Size in	S Straight Thread Size	d	L	L ₁	L ₂	H Wrench Flat	H ₁ Hex Flat	O-ring Uniform size Number	U	Working Pressure	
											psig	bar
H-ZCOSL 4- 4U	1/4	7/16-20	0.18 (4.57)	1.19 (30.23)	0.96 (24.38)	0.39 (9.91)	5/8"	9/16"	-904	0.65"	4500	310
H-ZCOSL 8- 6U	1/2	9/16-18	0.30 (7.62)	1.54 (39.12)	1.33 (33.78)	0.44 (11.18)	1-1/16"	11/16"	-906	0.79"	3600	240
H-ZCOSL 8- 8U	1/2	3/4-16	0.40 (10.16)	1.65 (41.91)	1.33 (33.78)	0.50 (12.7)	1-1/16"	7/8"	-908	1.01"	3600	240
H-ZCOSL12-12U	3/4	1-1/16-12	0.62 (15.75)	2.13 (54.10)	1.53 (38.86)	0.66 (16.76)	1-3/8"	1-1/4"	-912	1.44"	2900	190
H-ZCOSL16-16U	1	1-5/16-12	0.87 (22.10)	2.31 (58.67)	1.72 (43.69)	0.66 (16.76)	1-11/16"	1-1/2"	-916	1.73"	2300	150

Elbow

Connects ZCO glands.

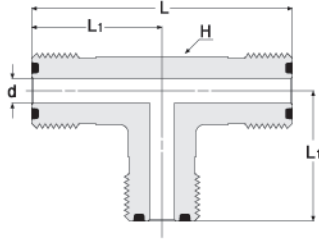


Part Number	ZCO Size in	d	L	H Wrench Flat	Working Pressure	
					psig	bar
H-ZCOLA- 4	1/4	0.18(4.57)	0.96(24.38)	1/2"	14300	980
H-ZCOLA- 8	1/2	0.40(10.16)	1.26(32.00)	13/16"	11100	760
H-ZCOLA-12	3/4	0.62(15.75)	1.48(37.59)	1-1/4"	10900	750
H-ZCOLA-16	1	0.87(22.10)	1.56(39.62)	1-11/16"	8800	600

Hy-Lok ZCO O-Ring Face Seal Fittings

Tee

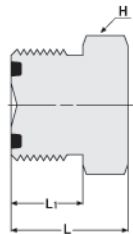
Connects ZCO glands.



Part Number	ZCO Size in	d	L	L ₁	H Wrench Flat	Working Pressure	
		in. (mm)				psig	bar
H-ZCOTA - 4	1/4	0.18 (4.57)	1.92 (48.79)	0.96 (24.38)	1/2"	14300	980
H-ZCOTA - 8	1/2	0.40 (10.16)	2.52 (64.00)	1.26 (32.00)	13/16"	11100	760
H-ZCOTA - 12	3/4	0.62 (15.75)	2.96 (75.18)	1.48 (37.59)	1-1/4"	10900	750
H-ZCOTA - 16	1	0.87 (22.10)	3.12 (79.25)	1.56 (39.62)	1-11/16"	8800	600

Plugs

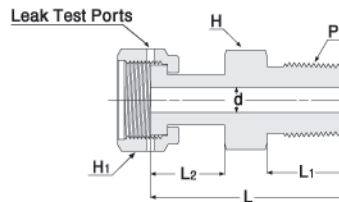
Seals a ZCO gland and female nut.



Part Number	ZCO Size in	L	L ₁	H Hex Flat
		in. (mm)		
H-ZCOP - 4	1/4	0.77(19.56)	0.47(11.94)	5/8"
H-ZCOP - 8	1/2	0.89(22.61)	0.56(14.22)	15/16"
H-ZCOP - 12	3/4	0.99(25.15)	0.56(14.22)	1-5/16"
H-ZCOP - 16	1	1.02(25.91)	0.56(14.22)	1-5/8"

Swivel Male Connector

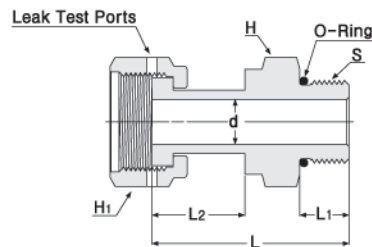
Converts female NPT thread to ZCO O-ring face seal.



Part Number	ZCO Size in	P Male NPT	d	L	L ₁	L ₂	H Hex Flat	H ₁ Hex Flat	Working Pressure	
			in. (mm)						psig	bar
H-ZCOSMC 4- 4N	1/4	1/4"	0.18(4.57)	1.59(40.39)	0.56(14.22)	0.72(18.29)	9/16"	11/16"	9800	670
H-ZCOSMC 8- 6N	1/2	3/8"	0.40(10.16)	1.67(42.42)	0.56(14.22)	0.78(19.81)	11/16"	1"	5600	380
H-ZCOSMC 8- 8N	1/2	1/2"	0.40(10.16)	1.87(47.50)	0.75(19.05)	0.79(20.07)	7/8"	1"	5600	380
H-ZCOSMC12-12N	3/4	3/4"	0.62(15.75)	2.03(51.56)	0.75(19.05)	0.94(23.88)	1-1/16"	1-1/2"	3900	260
H-ZCOSMC16-16N	1	1"	0.87(22.10)	2.36(59.94)	0.94(23.88)	0.98(24.89)	1-3/8"	1-3/4"	2900	190

Swivel SAE/MS Connector

Converts SAE/MS straight thread boss to ZCO O-ring face seal.

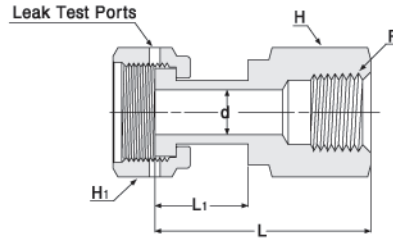


Part Number	ZCO Size in	S Straight Thread Size	d	L	L ₁	L ₂	H Hex Flat	H ₁ Hex Flat	O-ring Uniform size Number	Working Pressure	
			in. (mm)							psig	bar
H-ZCOSSC 4- 4U	1/4	7/16-20	0.18(4.57)	1.54(39.12)	0.36(9.14)	0.77(19.56)	9/16"	11/16"	-904	4500	310
H-ZCOSSC 8- 6U	1/2	9/16-18	0.40(10.16)	1.64(41.66)	0.39(9.91)	0.81(20.57)	11/16"	1"	-906	4500	310
H-ZCOSSC 8- 8U	1/2	3/4-16	0.40(10.16)	1.71(43.43)	0.44(11.18)	0.81(20.57)	7/8"	1"	-908	4500	310
H-ZCOSSC12-12U	3/4	1-1/16-12	0.62(15.75)	2.07(52.58)	0.59(14.99)	0.94(23.88)	1-1/4"	1-1/2"	-912	3600	240
H-ZCOSSC16-16U	1	1-5/16-12	0.87(22.10)	2.17(55.12)	0.59(14.99)	0.98(24.89)	1-1/2"	1-3/4"	-916	2900	190

Hy-Lok ZCO O-Ring Face Seal Fittings

Swivel Female Connector

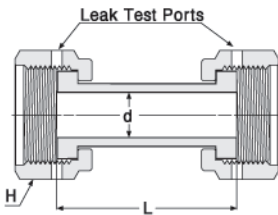
Converts male NPT thread to ZCO O-ring face seal.



Part Number	ZCO Size in	P Female NPT Size	d	L		L ₁	H Hex Flat	H ₁ Hex Flat	Working Pressure	
				in. (mm)					psig	bar
H-ZCOSFC 4- 4N	1/4	1/4"	0.18(4.57)	1.57(39.88)	0.72(18.29)		3/4"	1 1/16"	6600	450
H-ZCOSFC 8- 6N	1/2	3/8"	0.40(10.16)	1.73(43.94)	0.84(21.34)		7/8"	1"	5300	360
H-ZCOSFC 8- 6N	1/2	1/2"	0.40(10.16)	1.96(49.78)	0.82(20.83)		1-1/16"	1"	4900	330
H-ZCOSFC12-12N	3/4	3/4"	0.62(15.75)	2.12(53.85)	0.94(23.88)		1-5/16"	1-1/2"	4000	270
H-ZCOSFC16-16N	1	1"	0.87(22.10)	2.29(58.17)	0.98(24.89)		1-5/8"	1-3/4"	3000	200

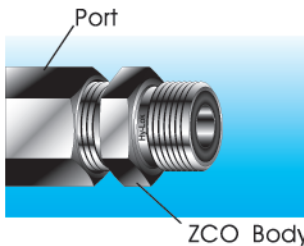
Swivel Union

Connects ZCO O-ring face seal.

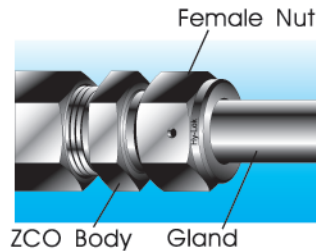


Part Number	ZCO Size in	d	L	H Wrench Flat	Working Pressure	
					psig	bar
H-ZCOSUA - 4	1/4	0.18(4.57)	1.42(36.07)	1 1/16"	10200	700
H-ZCOSUA - 8	1/2	0.40(10.16)	1.61(40.90)	1"	5800	390

Installation Instructions



Install ZCO body to existing port, tubing or equipment.



Assemble ZCO body with ZCO female nut and gland. And Tighten nut 1/8 turn with a wrench after finger tight to make sure metal to metal contact.

NOTE : When ZCO body or gland needs soldering, welding or brazing procedures, the O-ring should be removed to prevent possible damage

Ordering Information

Use **S316** for bodies and gland, nuts, **316L** for automatic tube weld fittings as a suffix to the basic part no. eg, H-ZCOSWG-8-S316, H-ZCOTWG-4-316L.

O-ring material selection

In case standard, No designator used.

Special O-Ring materials available on customer requests by indicating O-ring designator referred to Page 1. eg, H-ZCOTA-8-S316 (for standard O-ring), H-ZCOTA-8-BU-S316 (for Buna-N O-ring)

■ TYPE APPROVALS



American Bureau Shipping
CERTIFICATE NO.00-BK50288-X



Lloyd's Register
CERTIFICATE NO.01/10075



GERMANISCHER LLOYD
CERTIFICATE NO.57798 - 91 HH



DET NORSKE VERITAS
CERTIFICATE NO.P - 9100



Distributed by :

www.hy-lok.com