

Apparel

Version 2.0 / 4.3.2018



Complete protection, great comfort



Headwear

Facewear

Garments

Sleeves

Footwear

Apparel Selection Guide

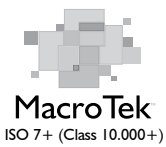
Cleanroom Apparel

Clean environments, by their nature, require separation of the product and operating personnel. Protective apparel provides that barrier. It keeps away the contamination generated by operating personnel from the process and the product and in addition protects the operator from working environment in the facilities where the process or product is dangerous or harmful. Valutek offers apparel from headwear to footwear to ensure full protection and separation.

70% contamination is operator based. Cleanroom apparel provides full coverage to the operator and minimizes this contamination to ensure the cleanliness of the controlled environment

Apparel Substrates

■ Spunbond Polypropylene (PP)



This material is made from 100% virgin spunbond polypropylene; it is ideal as an undergarment (i.e. bouffant cap, shoe cover). This non-woven, lightweight, breathable fabric provides a low-cost solution for protection against dry particulates.

■ Polyethylene Coated Polypropylene (PCPP)



This material is as same as polypropylene, but with a polyethylene coating. PCPP is also impervious to liquids, lint-free, and has excellent tensile and tear resistance. It provides economical protection to workers exposed to splashes from certain chemicals, blood, and particulates.

■ Cross-linked Polyethylene (CPE)



This material is an economical alternative when a low particulate material is required. Low density CPE is impervious to liquids, lint-free, and does not run or bleed when exposed to water.

■ Microporous (MP)



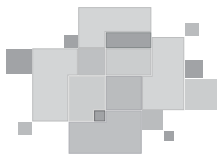
MP is a highly breathable, non-linting film that is bonded with a nonwoven fabric, offering an ultra-cool, comfortable alternative to TYVEK or other similar materials. It provides superior performance against non-toxic particulates, liquids, spray and dust.

Apparel Packaging

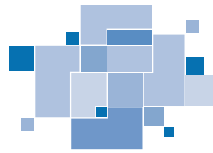
Valutek's apparel are packed in double poly bags, vacuum sealed, flat packed in carton boxes and with a carton liner.

Critical environment compatible. All apparel is lot traceable with retention samples held in Quality Control for 36 months from date of manufacturing.

Vacuum seal benefit: better storage, no particulate release, no ESD issue.



MacroTek™
ISO 7+ (Class 10.000+)



MicroTek™
ISO 5-6 (Class 100- 1.000)



NanoTek™
ISO 3-4 (Class 1- 10)

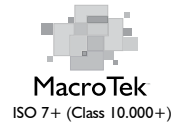




Spunbond Polypropylene Bouffant Cap [PDF](#)

- 100% non-linting, non-woven spunbond polypropylene fabric
- Disposable, comfortable with great breathability
- Filament covered, unexposed elastic edge design for secure fit and closure
- Can be worn with a hood for added protection
- Available in both standard weight and heavyweight versions

The bouffant caps are recommended for use in a cleanroom Class 10,000+ (ISO 7+) critical environment.



LATEX
FREE

Part Number	Size	Color	Weight	Packaging	Total/Case
VTBFCW-21	21"	White	11 gsm	100 ea/bag, 10 bags/case	1000 ea/case
VTBFCWHW-21	21"	White	17 gsm	100 ea/bag, 10 bags/case	1000 ea/case
VTBFCW-24	24"	White	11 gsm	100 ea/bag, 10 bags/case	1000 ea/case
VTBFCBL-24	24"	Blue	11 gsm	100 ea/bag, 10 bags/case	1000 ea/case
VTBFCWHW-24	24"	White	17 gsm	100 ea/bag, 10 bags/case	1000 ea/case



Microporous Hood [PDF](#)

- 100% non-linting microporous film bonded with a non-woven fabric
- Disposable, lightweight comfortable with high breathability
- Superior barrier protection against non-toxic particulates, liquids, sprays and dust

This hood is recommended for either stringent industrial or demanding cleanroom applications. This hood is ideal for use in a cleanroom Class 1-10 (ISO 3-4) critical environment that requires high contamination control and cleanliness.



LATEX
FREE

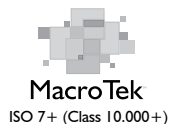
Part Number	Size	Color	Packaging	Total/Case
VTMHOOD-U	Universal	White	20 ea/bag, 5 bags/case	100 ea/case



Spunbond Polypropylene Beard Cover [PDF](#)

- 100% non-linting, non-woven spunbond polypropylene fabric
- Disposable, comfortable with full coverage
- Filament covered, unexposed elastic band for secure fit and closure
- Available in both standard weight and heavyweight versions

The beard covers are recommended for use in a cleanroom Class 10,000+ (ISO 7+) critical environment.



LATEX
FREE

Part Number	Size	Color	Weight	Packaging	Total/Case
VTBCV-18	18"	White	11 gsm	100 ea/bag, 10 bags/case	1000 ea/case
VTBCV-21	21"	White	11 gsm	100 ea/bag, 10 bags/case	1000 ea/case
VTBCVHW-18	18"	White	17 gsm	100 ea/bag, 10 bags/case	1000 ea/case

3-Ply Polypropylene Face Mask [PDF](#)

- 3-ply material provides excellent guard against bacteria and particulates
- Malleable aluminum noseband ensures adjustable proper seal and perfect fitting
- Disposable, lightweight with very low breathing resistance
- High filtration capacity
- Without glass fibers
- Available in both elastic ear loops and head band design



The facemasks are recommended for use in a cleanroom Class 100-1.000 (ISO 5-6) critical environment.



Part Number	Style	Color	Packaging	Total/Case
VTMASKELR-WH	Elastic ear loops	White	50 ea/bag, 20 bags/case	1000 ea/case
VTMASKELR-BL	Elastic ear loops	Blue	50 ea/bag, 20 bags/case	1000 ea/case
VTMASKHB-WH	Head Band	White	50 ea/bag, 20 bags/case	1000 ea/case

LATEX
FREE

Facewear

Spunlace Non-Woven Face Veil [PDF](#)

- 55% polyester and 45% cellulose non-linting fabric
- Malleable aluminum nosepiece ensures adjustable proper seal and perfect fitting
- Disposable, lightweight with very low breathing resistance
- Elastic head band design



The face veils are recommended for use in a cleanroom Class 100-1.000 (ISO 5-6) critical environment.

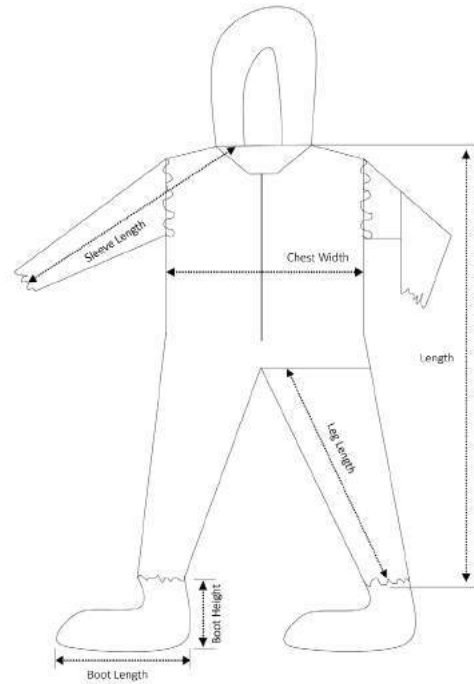
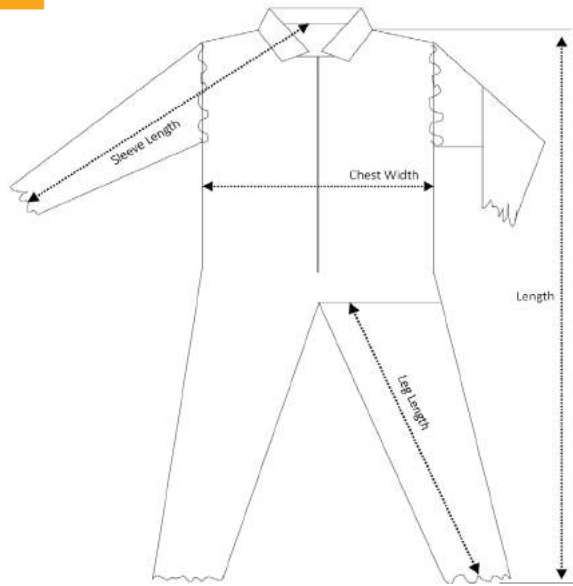


Part Number	Size	Color	Packaging	Total/Case
VTVEIL-EL	12" x 15"	White	50 ea/bag, 3 bags/case	150 ea/case

LATEX
FREE

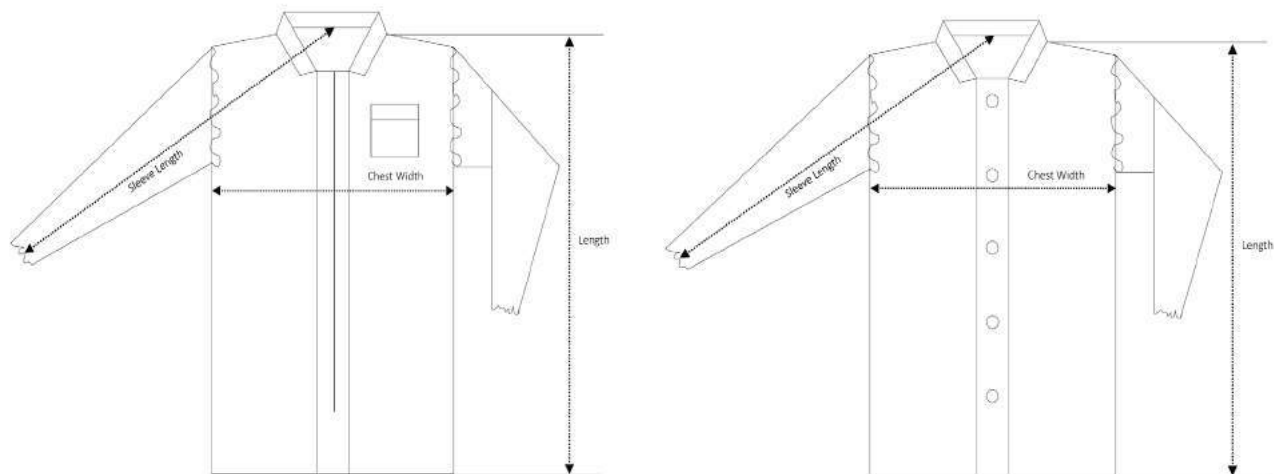
Facewear

Valutek Garment Sizing Chart



Valutek Coverall Sizing Chart

Size	Length	Chest Width	Sleeve Length	Leg Length	Boot Length	Boot Height
SM	63 ³ / ₄ "	23"	33"	28 ¹ / ₄ "	10"	6"
MD	65 ³ / ₄ "	24"	34"	28 ³ / ₄ "	11 ¹ / ₄ "	6"
LG	67 ¹ / ₄ "	25"	35"	29"	13 ¹ / ₄ "	6"
XL	70"	27"	36 ¹ / ₄ "	30"	15"	6"
XXL	72"	29 ¹ / ₂ "	37"	31 ¹ / ₂ "	15"	6"
XXXL	74 ¹ / ₂ "	31 ¹ / ₂ "	38"	32 ¹ / ₂ "	15"	6"
XXXXL	75 ¹ / ₂ "	32 ¹ / ₂ "	40"	33"	15"	6"



Valutek Lab Coat Sizing Chart

Size	Length	Chest Width	Sleeve Length
SM	38½"	25"	34"
MD	40"	26"	34½"
LG	41"	27½"	35½"
XL	42½"	28¼"	36¼"
XXL	44"	30"	37½"
XXXL	45½"	31"	39"
XXXXL	46½"	32"	40½"

Spunbond Polypropylene Lab Coat [PDF](#)

- 100% non-linting, non-woven, spunbond polypropylene fabric
- Disposable, lightweight and breathable
- Knee length with 5 snap closures, no pockets, elastic cuffs and a single ply shirt collar design
- Color option: white

This lab coat is recommended for use in a cleanroom Class 10,000+ (ISO 7+) critical environment. It is commonly used in electronic, medical device, and pharmaceutical industries where operator garment contamination is a concern. It is also highly suitable for a wide variety of macro contamination level applications, such as basic manufacturing, MDM and injection molding.



Garment

MacroTek
ISO 7+ (Class 10,000+)

Part Number	Size	Length	Chest Width	Sleeve Length	Packaging	Total/Case
VTLBCT-SM	SM	38½"	25"	34"	10 ea/bag, 3 bags/case	30 ea/case
VTLBCT-MD	MD	40"	26"	34½"	10 ea/bag, 3 bags/case	30 ea/case
VTLBCT-LG	LG	41"	27½"	35½"	10 ea/bag, 3 bags/case	30 ea/case
VTLBCT-XL	XL	42½"	28¼"	36¼"	10 ea/bag, 3 bags/case	30 ea/case
VTLBCT-2X	XXL	44"	30"	37½"	10 ea/bag, 3 bags/case	30 ea/case
VTLBCT-3X	XXXL	45½"	31"	39"	10 ea/bag, 3 bags/case	30 ea/case
VTLBCT-4X	XXXXL	46½"	32"	40½"	10 ea/bag, 3 bags/case	30 ea/case

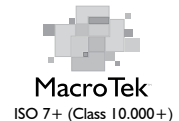
LATEX
FREE



Polyethylene Coated Polypropylene Lab Coat [PDF](#)

- 100% non-linting, non-woven, spunbond polypropylene coated with polyethylene
- Disposable, lightweight and breathable
- Knee length with 5 snap closures, no pockets, elastic cuffs and a single ply shirt collar design
- Superior barrier protection against non-toxic particulates, liquids, sprays and dust
- Color option: white

This lab coat is recommended for use in a cleanroom Class 10,000+ (ISO 7+) critical environment. It is commonly used in electronic, medical device, and pharmaceutical industries where operator garment contamination is a concern. It is also highly suitable for a wide variety of macro contamination level applications, such as basic manufacturing, MDM and injection molding.



LATEX
FREE

Part Number	Size	Length	Chest Width	Sleeve Length	Packaging	Total/Case
VTLBCTC-SM	SM	38½"	25"	34"	10 ea/bag, 3 bags/case	30 ea/case
VTLBCTC-MD	MD	40"	26"	34½"	10 ea/bag, 3 bags/case	30 ea/case
VTLBCTC-LG	LG	41"	27½"	35½"	10 ea/bag, 3 bags/case	30 ea/case
VTLBCTC-XL	XL	42½"	28¾"	36¾"	10 ea/bag, 3 bags/case	30 ea/case
VTLBCTC-2X	XXL	44"	30"	37½"	10 ea/bag, 3 bags/case	30 ea/case
VTLBCTC-3X	XXXL	45½"	31"	39"	10 ea/bag, 3 bags/case	30 ea/case
VTLBCTC-4X	XXXXL	46½"	32"	40½"	10 ea/bag, 3 bags/case	30 ea/case



Microporous Lab Coat [PDF](#)

- 100% non-linting microporous film bonded with a non-woven fabric
- Disposable, lightweight and highly breathable
- Knee length with a zipper closure, one pocket, elastic cuffs and a single ply shirt collar design
- Color option: white

This lab coat is recommended for either stringent industrial or demanding cleanroom applications. This lab coat is ideal for use in a cleanroom Class 1-10 (ISO 3-4) critical environment that require high contamination control and cleanliness.



LATEX
FREE

Part Number	Size	Length	Chest Width	Sleeve Length	Packaging	Total/Case
VTMLBCTZ-SM	SM	38½"	25"	34"	5 ea/bag, 6 bags/case	30 ea/case
VTMLBCTZ-MD	MD	40"	26"	34½"	5 ea/bag, 6 bags/case	30 ea/case
VTMLBCTZ-LG	LG	41"	27½"	35½"	5 ea/bag, 6 bags/case	30 ea/case
VTMLBCTZ-XL	XL	42½"	28¾"	36¾"	5 ea/bag, 6 bags/case	30 ea/case
VTMLBCTZ-2X	XXL	44"	30"	37½"	5 ea/bag, 6 bags/case	30 ea/case
VTMLBCTZ-3X	XXXL	45½"	31"	39"	5 ea/bag, 6 bags/case	30 ea/case
VTMLBCTZ-4X	XXXXL	46½"	32"	40½"	5 ea/bag, 6 bags/case	30 ea/case

Spunbond Polypropylene Coverall

- 100% non-linting, non-woven, spunbond polypropylene fabric
- Disposable, lightweight and breathable full body protection
- Zipped closure, elastic wrist and ankle cuffs and a single shirt collar design
- Color option: white



This coverall is recommended for use in a cleanroom Class 10,000+ (ISO 7+) critical environment. It is commonly used in electronic, medical device, and pharmaceutical industries where operator garment contamination is a concern. It is also highly suitable for a wide variety of macro contamination level applications, such as basic manufacturing, MDM and injection molding.



Part Number	Size	Length	Chest Width	Sleeve Length	Leg Length	Packaging	Total/Case
VTCVRL-SM	SM	63¾"	23"	33"	28¾"	5 ea/bag, 5 bags/case	25 ea/case
VTCVRL-MD	MD	65¾"	24"	34"	28¾"	5 ea/bag, 5 bags/case	25 ea/case
VTCVRL-LG	LG	67¾"	25"	35"	29"	5 ea/bag, 5 bags/case	25 ea/case
VTCVRL-XL	XL	70"	27"	36¾"	30"	5 ea/bag, 5 bags/case	25 ea/case
VTCVRL-2X	XXL	72"	29½"	37"	31½"	5 ea/bag, 5 bags/case	25 ea/case
VTCVRL-3X	XXXL	74½"	31½"	38"	32½"	5 ea/bag, 5 bags/case	25 ea/case
VTCVRL-4X	XXXXL	75½"	32½"	40"	33"	5 ea/bag, 5 bags/case	25 ea/case

LATEX
FREE



Microporous Coverall [PDF](#)

- 100% non-linting microporous film bonded with a non-woven fabric
- Disposable, lightweight and breathable full body protection
- Zipped closure with a flap, elastic wrist and ankle cuffs and a single shirt collar design
- Superior barrier protection against non-toxic particulates, liquids, sprays and dust
- Color option: white

This coverall is recommended for either stringent industrial or demanding cleanroom applications. This coverall is ideal for use in a cleanroom Class 1-10 (ISO 3-4) critical environment as well as other critical areas that require high contamination control and cleanliness.



LATEX
FREE

Part Number	Size	Length	Chest Width	Sleeve Length	Leg Length	Packaging	Total/Case
VTMCVRL-SM	SM	63¾"	23"	33"	28¾"	5 ea/bag, 5 bags/case	25 ea/case
VTMCVRL-MD	MD	65¾"	24"	34"	28¾"	5 ea/bag, 5 bags/case	25 ea/case
VTMCVRL-LG	LG	67¾"	25"	35"	29"	5 ea/bag, 5 bags/case	25 ea/case
VTMCVRL-XL	XL	70"	27"	36¾"	30"	5 ea/bag, 5 bags/case	25 ea/case
VTMCVRL-2X	XXL	72"	29½"	37"	31½"	5 ea/bag, 5 bags/case	25 ea/case
VTMCVRL-3X	XXXL	74½"	31½"	38"	32½"	5 ea/bag, 5 bags/case	25 ea/case
VTMCVRL-4X	XXXXL	75½"	32½"	40"	33"	5 ea/bag, 5 bags/case	25 ea/case



Microporous Coverall with Hood and Boots [PDF](#)

- 100% non-linting microporous film bonded with a non-woven fabric
- Disposable, lightweight and highly breathable
- Zipped closure with a flap, elastic wrist and ankle cuffs, with an elastic hood and attached anti-skid PVC sole boot covers.
- Superior barrier protection against non-toxic particulates, liquids, sprays and dust
- Color option: white

This coverall is recommended for either stringent industrial or demanding cleanroom applications. This coverall is ideal for use in a cleanroom Class 1-10 (ISO 3-4) critical environment as well as other critical areas that require high contamination control and cleanliness.



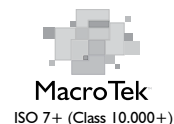
LATEX
FREE

Part Number	Size	Length	Chest Width	Sleeve Length	Leg Length	Boot Length	Packaging	Total/Case
VTMCVRLHB-SM	SM	63¾"	23"	33"	28¾"	10"	5 ea/bag, 5 bags/case	25 ea/case
VTMCVRLHB-MD	MD	65¾"	24"	34"	28¾"	11¼"	5 ea/bag, 5 bags/case	25 ea/case
VTMCVRLHB-LG	LG	67¾"	25"	35"	29"	13¾"	5 ea/bag, 5 bags/case	25 ea/case
VTMCVRLHB-XL	XL	70"	27"	36¾"	30"	15"	5 ea/bag, 5 bags/case	25 ea/case
VTMCVRLHB-2X	XXL	72"	29½"	37"	31½"	15"	5 ea/bag, 5 bags/case	25 ea/case
VTMCVRLHB-3X	XXXL	74½"	31½"	38"	32½"	15"	5 ea/bag, 5 bags/case	25 ea/case
VTMCVRLHB-4X	XXXXL	75½"	32½"	40"	33"	15"	5 ea/bag, 5 bags/case	25 ea/case

Spunbond Polypropylene Sleeve [PDF](#)

- 100% non-linting, non-woven spunbond polypropylene fabric
- Disposable, lightweight and breathable
- Non-latex elastic cuffs at the wrist and arm

This sleeve is recommended for use in a cleanroom Class 10,000+ (ISO 7+) critical environment.



Part Number	Size	Color	Packaging	Total/Case
VTSLV-18	18"	White	10 ea/roll, 10 rolls/bag, 2 bags/case	200 ea/case
VTSLV-21	21"	White	10 ea/roll, 10 rolls/bag, 2 bags/case	200 ea/case

LATEX
FREE

Sleeves

Polyethylene Coated Polypropylene Sleeve [PDF](#)

- 100% non-linting, non-woven, spunbond polypropylene coated with polyethylene
- Disposable, lightweight and breathable
- Non-latex elastic cuffs at the wrist and arm

This sleeve is recommended for use in a cleanroom Class 100-1,000 (ISO 5-6) critical environment. It is also commonly used in applications where durability, liquid protection and cleanliness are of great importance.



Part Number	Size	Color	Packaging	Total/Case
VTSLVC-21	21"	White	10 ea/roll, 10 rolls/bag, 2 bags/case	200 ea/case

LATEX
FREE

Sleeves

Microporous Sleeve [PDF](#)

- 100% non-linting microporous film bonded with a non-woven fabric
- Disposable, lightweight and breathable
- Non-latex elastic cuffs at the wrist and arm

This sleeve is recommended for use in a cleanroom Class 1-10 (ISO 3-4) critical environment.

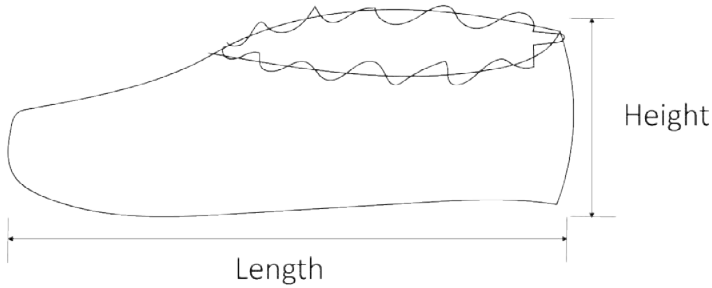


Part Number	Size	Color	Packaging	Total/Case
VTMSLV-18	18"	White	50 ea/bag, 4 bags/case	200 ea/case
VTMSLV-21	21"	White	50 ea/bag, 4 bags/case	200 ea/case

LATEX
FREE

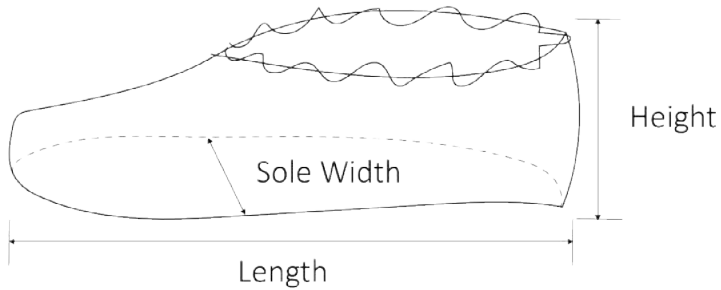
Sleeves

Valutek Shoe Cover Sizing Chart



General Shoe Cover Sizing Chart

Size	Length	Height
MD	14"	6"
LG	16"	6"
XL	18"	6"

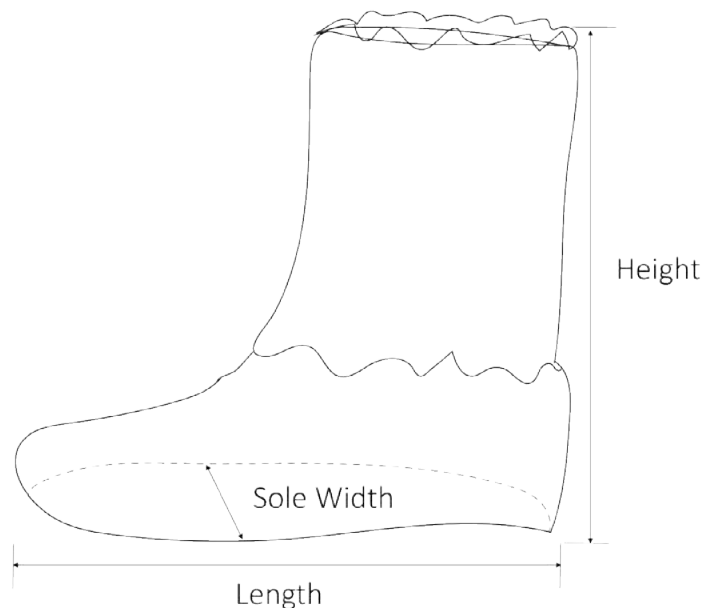


PVC Sole Shoe Cover Sizing Chart

Size	Length	Height	Sole Width
SM	10"	6"	4¼"
MD	11¼"	6"	4¼"
LG	13¼"	6"	4½"
XL	14¼"	6"	4¾"
2X	15"	6"	4¾"

PVC Sole Boot Cover Sizing Chart

Size	Length	Height	Sole Width
MD	11¼"	18"	4¼"
LG	13¼"	18"	4¾"
XL	15"	18"	4¾"



Valutek Shoe Cover Conversion Chart



Valutek Shoe Cover Sizes | Small • Medium • Large • X-Large

Version 2.0 / 4.3.20:

USA/CANADA			MEXICO		UK/IRELAND			EUROPE	
Men	Women	VT Shoe Cover Size	Men/Women	VT Shoe Cover Size	Men	Women	VT Shoe Cover Size	Men/Women	VT Shoe Cover Size
14	15½	XL	12.5	XL	13½	13	XL	48½	XL
12½	14		11		12	11½		46½	
11½	13		10		11	10½		45	
10½	12	LG	9	LG	10	9½	LG	44	LG
9	10½		7.5		8½	8		43	
8½	10		7		8	7½		42	
8	9½	MD	6.5	MD	7½	7	MD	41	MD
7½	9		6		7	6½		40	
7	8½		5.5		6½	6		39	
6½	8		5		6	5½		38½	
6	7½		4.5		6	5		38	
5½	7	SM			5½	4½	SM	37½	SM
5	6½		4½	4	4	37			
4½	6		4	3½	3	36			
4	5½				3½	3		35½	
3½	5				3	2½		35	

	Small			Medium				Large				X- Large				
AUSTRALIA	3	3½	4	4½	5	5½	6	6½	7	7½	8	8½	10	11	12	13½
JAPAN	21.5	22	22.5	23	23.5	24	24.5	25	25.5	26	26.5	27.5	28.5	29.5	30.5	31.5
KOREA	228	231	235	238	241	245	248	251	254	257	260	267	273	279	286	292

	Small		Medium				Large				X- Large					
AUSTRALIA	3½	4	4½	5	5½	6	6½	7	7½	8	8½	9	10½	11½	12½	14
JAPAN	21	21.5	22	22.5	23	23.5	24	24.5	25	25.5	26	27	28	29	30	31
KOREA	228	231	235	238	241	245	248	251	254	257	260	267	273	279	286	292

US/CANADA	3½	4	4½	5	5½	6	6½	7	7½	8	8½	9	10½	11½	12½	14
INCHES	9	9½	9¾	9¾	9¾	9¾	9¾	9¾	10	10½	10¾	10¾	10¾	11	11¼	11¾
CENTIMETERS	22.8	23.1	23.5	23.8	24.1	24.5	24.8	25.1	25.4	25.7	26	26.7	27.3	27.9	28.6	29.2
MONDOPOINT	228	231	235	238	241	245	248	251	254	257	26	267	273	279	286	292

International Men Shoe Size Conversion Table

International Women Shoe Size Conversion Table

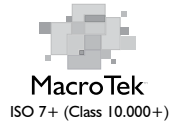
Measurements Guide



Spunbond Polypropylene Shoe Cover [PDF](#)

- 100% non-linting, non-woven spunbond polypropylene fabric with stitched seams
- Disposable, lightweight, strong and durable
- Elastic ankle cuffs

This shoe cover is recommended for use in a cleanroom Class 10,000+ (ISO 7+) critical environment.



LATEX
FREE

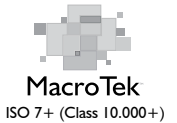
Part Number	Size	Length	Height	Color	Packaging	Total/Case
VTSHCVPP-LG	LG	16"	6"	Blue	100 ea/bag, 3 bags/case	300 ea/case
VTSHCVPP-XL	XL	18"	6"	Blue	100 ea/bag, 3 bags/case	300 ea/case



Anti-Skid Polypropylene Shoe Cover [PDF](#)

- 100% non-linting, non-woven spunbond polypropylene fabric with stitched seams
- Disposable, lightweight, strong and durable
- Elastic ankle cuffs
- Sprayed latex anti-skid treads on the bottom for safety

This shoe cover is recommended for use in a cleanroom Class 10,000+ (ISO 7+) critical environment. It is also commonly used for protecting against dirt, grime, and certain dry particulates in nonhazardous environments.



LATEX
FREE

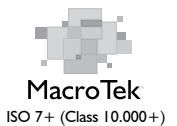
Part Number	Size	Length	Height	Color	Packaging	Total/Case
VTSHCVAS-MD	MD	14"	6"	Blue	100 ea/bag, 3 bags/case	300 ea/case
VTSHCVAS-LG	LG	16"	6"	Blue	100 ea/bag, 3 bags/case	300 ea/case
VTSHCVAS-XL	XL	18"	6"	Blue	100 ea/bag, 3 bags/case	300 ea/case



Anti-Skid Polypropylene ESD Shoe Cover [PDF](#)

- 100% non-linting, non-woven spunbond polypropylene fabric with stitched seams
- Disposable, lightweight, strong and durable
- Elastic ankle cuffs
- Sprayed latex anti-skid treads on the bottom for safety
- A 19.6" long conductive ribbon stitched on a solid seam to provide ESD grounding

This shoe cover is recommended for use in a cleanroom Class 10,000+ (ISO 7+) critical environment. It is commonly used for protecting against dirt, grime and certain dry particulates in nonhazardous environments and for protecting sensitive devices in the work area.



LATEX
FREE



Part Number	Size	Length	Height	Color	Packaging	Total/Case
VTSHCVASEDLF-L	LG	16"	6"	Blue	100 ea/bag, 3 bags/case	300 ea/case
VTSHCVASEDLF-X	XL	18"	6"	Blue	100 ea/bag, 3 bags/case	300 ea/case

Cross-Linked Polyethylene Shoe Cover [PDF](#)

- 100% cross-linked polyethylene with heat-sealed seams
- Disposable, lightweight, strong and durable
- Elastic ankle cuffs
- Impervious to non-hazardous liquids
- Available in lightweight, standard weight and heavy weight versions



Footwear

This shoe cover is recommended for use in a cleanroom Class 100 -1.000 (ISO 5-6) critical environment. It is the most economical shoe cover available that provides full liquid protection and is commonly used in microelectronics and pharmaceutical industries.



Part Number	Size	Length	Height	Thickness	Color	Packaging	Total/Case
VTSHCVPLW-BL	LG	16"	6"	3 mil	blue	100 ea/bag, 10 bags/case	1000 ea/case
VTSHCVPL-WH	LG	16"	6"	5 mil	white	100 ea/bag, 3 bags/case	300 ea/case
VTSHCVPL-BL	LG	16"	6"	5 mil	blue	100 ea/bag, 3 bags/case	300 ea/case
VTSHCVPLHW-BL	LG	16"	6"	8 mil	blue	100 ea/bag, 3 bags/case	300 ea/case
VTSHCVPLHWX-BL	XL	18"	6"	8 mil	blue	100 ea/bag, 3 bags/case	300 ea/case
VTSHCVPLHWX-WH	XL	18"	6"	8 mil	white	100 ea/bag, 3 bags/case	300 ea/case

LATEX
FREE

Polyethylene Coated Polypropylene PVC Sole Shoe Cover [PDF](#)

- 100% non-linting, non-woven, spunbond polypropylene coated with polyethylene
- Disposable, lightweight and breathable
- Stitched seams and elastic ankle cuffs
- Anti-skid PVC sole provides excellent protection against wet and smooth surfaces
- Superior coefficient of friction



Footwear

This shoe cover is recommended for use in a cleanroom Class 1-10 (ISO 3-4) critical environment that requires high contamination control and cleanliness.



Part Number	Size	Length	Height	Sole Width	Color	Packaging	Total/Case
VTSHCVPLVW-SM	SM	10"	6"	4¼"	white	50 ea/bag, 4 bags/case	200 ea/case
VTSHCVPLVW-MD	MD	11¼"	6"	4¼"	white	50 ea/bag, 4 bags/case	200 ea/case
VTSHCVPLVW-LG	LG	13¼"	6"	4¾"	white	50 ea/bag, 4 bags/case	200 ea/case
VTSHCVPLVW-XL	XL	15"	6"	4¾"	white	50 ea/bag, 4 bags/case	200 ea/case

LATEX
FREE



Valutek PE-Coated Polypropylene Non-Skid Shoe Cover [PDF](#)

- Clean, low-linting, and latex free fabric
- Non-skid PVC sole provides excellent protection against wet and smooth surfaces
- Superior coefficient of friction

This shoe cover is recommended for use in a cleanroom Class 1-10 (ISO 3-4) critical environment that requires high contamination control and cleanliness.



LATEX
FREE

Part Number	Size	Length	Height	Sole Width	Color	Packaging	Total/Case
VTSHCVPLWNE-SM	SM	10"	6"	4¼"	white	50 ea/bag, 4 bags/case	200 ea/case
VTSHCVPLWNE-MD	MD	11¼"	6"	4¼"	white	50 ea/bag, 4 bags/case	200 ea/case
VTSHCVPLWNE-LG	LG	13¼"	6"	4½"	white	50 ea/bag, 4 bags/case	200 ea/case
VTSHCVPLWNE-XL	XL	14¼"	6"	4¾"	white	50 ea/bag, 4 bags/case	200 ea/case
VTSHCVPLWNE-2X	2X	15"	6"	4¾"	white	50 ea/bag, 4 bags/case	200 ea/case



Polyethylene Coated Polypropylene PVC Sole Boot Cover [PDF](#)

- 100% non-linting, non-woven, spunbond polypropylene coated with polyethylene Disposable, lightweight and breathable
- Stitched seams and elastic leg cuffs
- Non-skid PVC sole provides excellent protection against wet and smooth surfaces Superior coefficient of friction

This boot cover is recommended for use in a cleanroom Class 1-10 (ISO 3-4) critical environment that requires high contamination control and cleanliness.



LATEX
FREE

Part Number	Size	Length	Height	Sole Width	Color	Packaging	Total/Case
VTBTCVPLVW-MD	MD	11¼"	18"	4¼"	white	20 ea/bag, 10 bags/case	200 ea/case
VTBTCVPLVW-LG	LG	13¼"	18"	4¾"	white	20 ea/bag, 10 bags/case	200 ea/case
VTBTCVPLVW-XL	XL	15"	18"	4¾"	white	20 ea/bag, 10 bags/case	200 ea/case