

## POINT-OF-USE DISC FILTERS

Available in four membrane types and multiple shell types and connection options for use in final filtration to protect print heads

## POINT-OF-USE DISC FILTERS

### POLYPROPYLENE, STAINLESS STEEL, AND PTFE MEMBRANE FILTERS FOR FINAL FILTRATION TO PROTECT PRINT HEADS, AND FOR TESTING

Cobetter® Point-of-Use Disc Filters are ideal solutions for final filtration to protect print heads as well as for testing ink formulations and conducting printing trials.

These filters are available in four kinds of media: PPEP - non-fiber releasing polypropylene, PTFE hydrophobic membrane, Glass fiber media, and stainless steel mesh. Additionally, these disc capsules are available in a wide range of configurations including hose barb, Luer Lock, NPT, and quick-coupling.

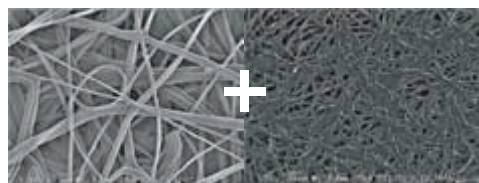
FEATURE	BENEFIT
<b>Available in four filter media options</b>	<b>Polypropylene Depth Media:</b> <ul style="list-style-type: none"> <li>• Provides high flow rate, and high contaminant holding capacity</li> <li>• Non-fiber releasing media for ultra-pure downstream cleanliness</li> </ul>
	<b>316L Stainless Steel Mesh:</b> <ul style="list-style-type: none"> <li>• Broad chemical compatibility</li> <li>• Resistant to high temperature</li> <li>• Initial low differential pressure with high flow rate</li> </ul>
	<b>Glass Fiber Filtration Media (for gas applications):</b> <ul style="list-style-type: none"> <li>• High porosity with high flow rates and low pressure drop</li> <li>• High contaminant hold capacity</li> <li>• Stiff structure of glass micro-fiber media provides durability</li> </ul>
	<b>PTFE Membrane:</b> <ul style="list-style-type: none"> <li>• Hydrophobic PTFE</li> <li>• For solvent inks</li> <li>• High chemical resistancy</li> </ul>
<b>Thermal welding technology</b>	No adhesive resins to ensure capsule filter's cleanliness and long-use pressure endurance
<b>Multiple connection options</b>	Available in a variety of connector configurations to allow easy connection in most common applications.
<b>Quality Assurance</b>	Manufactured in a facility which adheres to ISO 9001 Practices.



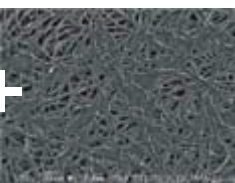
### Typical Applications

Final Point-of-Use Filtration of:

- Dye-based Ink Jet Inks
- Active Dye Ink Jet Inks
- Acid Dye Ink Jet Inks



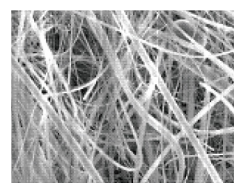
Pre-Polypropylene depth media



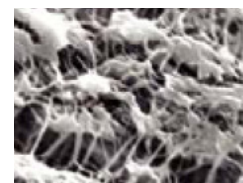
Final non-fiber-releasing polypropylene media



316L Stainless Steel Mesh



Glass Fiber media

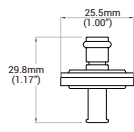


PTFE media

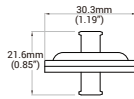
## SPECIFICATIONS

<b>Filter media</b>	<ul style="list-style-type: none"> <li>• PPEP - Pleated Pre-Polypropylene depth media + final non-fiber-releasing Polypropylene media</li> <li>• Hydrophobic PTFE media</li> <li>• 316L Stainless Steel media</li> <li>• Glass Fiber media</li> </ul>
<b>Cage/Core/Shell/End Cap</b>	Polypropylene or opaque UV resistant shells or black UV resistant shells
<b>Max. Operating temperature</b>	50°C (120°F)
<b>Max. Operating Pressure</b>	0.7 Mpa (7.0 bar, 101 psi)

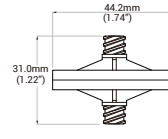
## DIMENSIONS



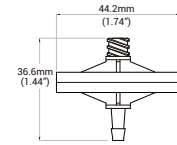
**20DISC**



**W25DISC**

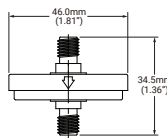


**37 DISC**

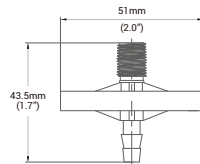


**LH37DISC**

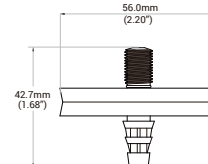
<b>Inlet</b>	8 mm Quick Coupling	Female Luer Lock	Female Luer Lock	Female Luer Lock
<b>Outlet</b>	Female Luer Lock	Female Luer Lock	Female Luer Lock	4 mm Hose barb
<b>Filtration Area</b>	2.54 cm <sup>2</sup> (0.39 in. <sup>2</sup> )	4.15 cm <sup>2</sup> (0.64 in. <sup>2</sup> )	7.3 cm <sup>2</sup> (1.13 in. <sup>2</sup> )	7.3 cm <sup>2</sup> (1.13 in. <sup>2</sup> )



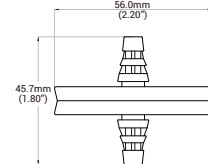
**DNGUF**



**H47DISC**

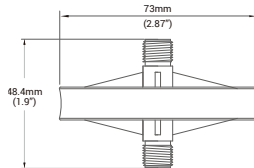


**47DISC**

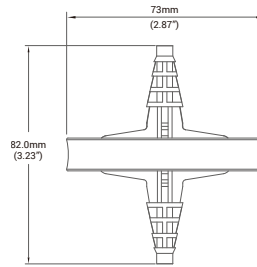


**SS47DISC**

<b>Inlet</b>	1/8" Jaco Compatible Nut	1/4" NPT	1/4" NPT	1/4 - 3/8" Hose barb
<b>Outlet</b>	1/8" Jaco Compatible Nut	5-6 mm Hose barb	1/4 - 3/8" Hose barb	1/4 - 3/8" Hose barb
<b>Filtration Area</b>	8.5 cm <sup>2</sup> (1.32 in. <sup>2</sup> )	13.8 cm <sup>2</sup> (2.14 in. <sup>2</sup> )	15.2cm <sup>2</sup> (2.56 in. <sup>2</sup> )	15.2cm <sup>2</sup> (2.56 in. <sup>2</sup> )



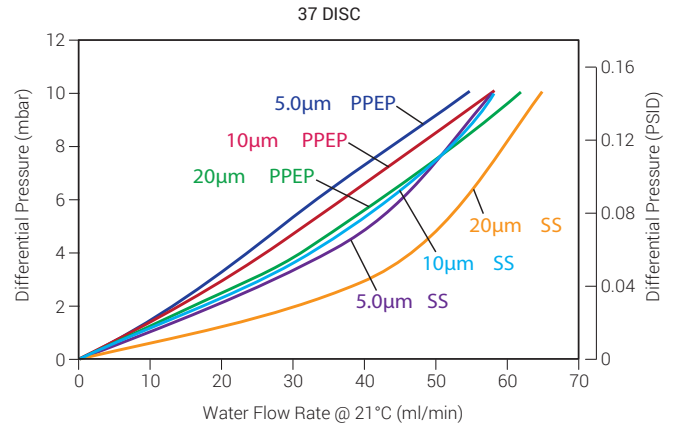
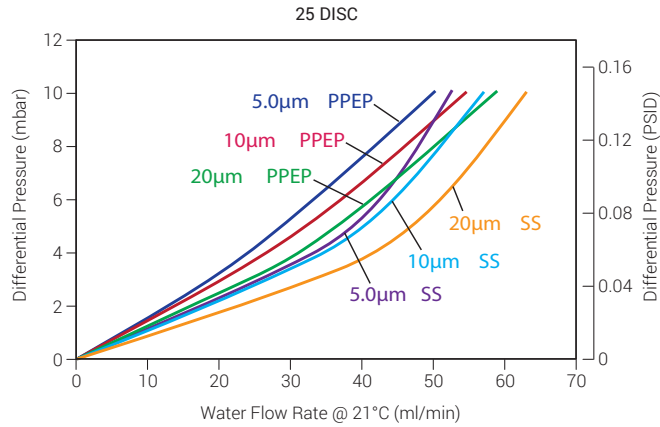
**AV50-J**



**AV50**

<b>Inlet</b>	1/4" Jaco compatible	1/4 - 1/2" Hose barb
<b>Outlet</b>	1/4" Jaco compatible	1/4 - 1/2" Hose barb
<b>Filtration Area</b>	20cm <sup>2</sup> (3.10 in. <sup>2</sup> )	20cm <sup>2</sup> (3.10 in. <sup>2</sup> )

## FLOW RATES



## ORDERING INFORMATION

EXAMPLE: **37DISCB-PPEP0500NC** = 37disc type, black polypropylene shell, PPEP membrane, 5 µm

<div style="border: 1px solid black; width: 40px; height: 20px; margin: 0 auto;"></div>	<div style="border: 1px solid black; width: 40px; height: 20px; margin: 0 auto;"></div>	-	<div style="border: 1px solid black; width: 40px; height: 20px; margin: 0 auto;"></div>	<div style="border: 1px solid black; width: 40px; height: 20px; margin: 0 auto;"></div>	<div style="border: 1px solid black; width: 40px; height: 20px; margin: 0 auto;"></div>	<b>C</b>
<p><b>Type (see drawings)</b>                  20DISC (SS media only)                  W25DISC                  37DISC                  LH37DISC                  H47DISC                  DNGUF                  47DISC                  SS47DISC                  AV50                  AV50-J</p>	<p><b>Shell</b>                  20DISC:                  — = Opaque (Tan) Polypropylene                  All Others:                  — = Standard Polypropylene                  B = Black Polypropylene</p>	<p><b>Filter Media</b>                  PPEP = Polypropylene Media                  SS = Stainless Steel Mesh                  GF = Glass Fiber (gas filtration)                  PTFE = PTFE Membrane (Hydrophobic)</p>	<p><b>Removal Rating</b>                  PPEP:                  0100 = 1.0 µm                  0500 = 5 µm                  1000 = 10 µm                  2000 = 20 µm                  5000 = 50 µm                  SS:                  0500 = 5 µm                  1000 = 10 µm                  2000 = 20 µm                  GF:                  0045 = 0.45 µm                  0100 = 1.0 µm                  0500 = 5 µm                  1000 = 10 µm                  PTFE:                  0022 = 0.22 µm                  0045 = 0.45 µm                  0100 = 1.0 µm</p>	<p><b>Fitting Adaptors</b>                  A = 1/8" Jaco Compatible Nut                  C = Female Luer Lock to 4mm hose barb adaptor                  D = Female Luer Lock to 3 mm hose barb adaptor                  E = Luer Locks end caps                  N = No adaptors                  Q = Female Luer Lock to 8 mm hose barb adaptor</p>		



BANNER INDUSTRIES IS THE EXCLUSIVE DISTRIBUTOR FOR COBETTER PRODUCTS IN THE USA  
 Visit [www.bannerindustries.com](http://www.bannerindustries.com) and select the Contact Us link to find the location nearest you. The Banner Industries of N.E., Inc. Terms and Conditions of Sale apply and are fully and expressly incorporated herein by reference and constitute a part of any contract for the purchase of the products described herein.

[www.bannerindustries.com](http://www.bannerindustries.com) | Technical Sales: [filtration@bannerindustries.com](mailto:filtration@bannerindustries.com)

CBBPP1085 Rev. 09082020  
 Copyright © 2020 Banner Industries, Inc. All rights reserved.