

H-GCF II GAS FILTER HOUSINGS

Gas filter housings for medium and high-pressure air/gas filtration in biotechnology, chemical, electronic, and food & beverage industries

H-GCF II GAS FILTER HOUSINGS

GAS FILTER HOUSINGS FOR MEDIUM AND HIGH-PRESSURE AIR/GAS FILTRATION

H-GCF Gas Filter Housings are designed for medium and high-pressure air/gas filtration in biotechnology, chemical, electronic, and food & beverage industries.

The housings are compatible with standard cartridges to meet the requirements of air/gas filtration. Endcap design of the housing is external 226 double o-ring with 2 locking tabs which provides safe and secure sealing. Features include mechanical polishing with a Ra of 15 µin (0.3 µm), easy-to-clean, and thorough drainage which eliminates concerns about remaining liquids. Electro-polishing finish is also an available option.

FEATURE	BENEFIT
Designed for 226 cartridges	Provides safe and secure sealing of cartridges with 226 double o-ring and 2 locking tabs
Quality surface finishing	With an internal Ra of 0.38 µm (15 µin.) and external Ra of 0.6 µm (26 µin), the sanitary surface finish prevents entrapment or build-up of contaminants. All electro-polishing is also available
Vent and drain	Available with vent and drain to allow easy clean and thorough drainage.
Standard housing options	Housing flange connections are designed in accordance with international standards to allow connection to industry-standard connections.

SPECIFICATIONS

Surface finish	Polish Type: Mirror Polish; Sand blasting Surface Option: Internal Ra: 0.38 µm (15 µin.) External Ra: 0.6 µm (26 µin.)
Housing body	304; 316L
Vent/Drain	304; 316L
Screws	304
Leg	304
O-ring/gaskets	Silicone, FKM, EPDM
Max. operating pressure	Working Pressure: 1.0 MPa (10 bar, 145 psi)
Max. operating temperature	150°C (302°F) / Design temperature: 140°C

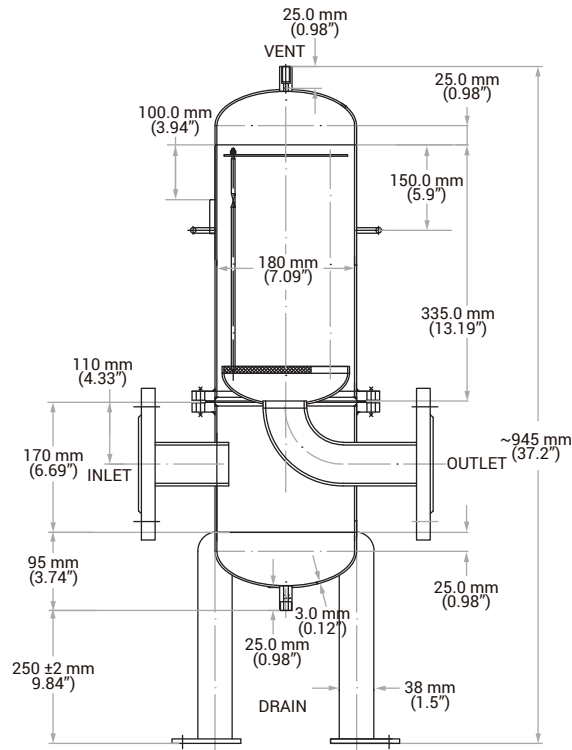


Typical Applications

- Gas filtration

In-line steam sterilization	In-situ / Autoclave for 30 minutes at 121°C
Body connection	Flange
Inlet/Outlet	Flange
Vent	1/2" FNPT
Drain	1/2" FNPT with valve

DIMENSIONS



ORDERING INFORMATION

EXAMPLE: **H-GCF II0110SSFF25EAYP** = 1 round, 10", 316L, 226, Flange, 1" Flange I/O, with EPDM seals, mirror polish, 145 psi max, pharmaceutical

H-GCF II

- Number of Filters**
01 = 1 round
03 = 3 round
- Filter Length**
05 = 5"
10 = 10"
20 = 20"
30 = 30"
- Material**
F = 304
S = 316L
- Cartridge Configuration**
S = 226
- Housing Connection**
F = Flange
- Inlet/Outlet**
F25 = 1" Flange (DN25)
F50 = 2" Flange (DN50)
- Seal Material**
S = Silicone
E = EPDM
V = FKM
- Surface Finish**
A = Mirror Polish
B = Additional Internal Electro-polished
C = Sand Blasted
- Design Pressure**
Y = 1.0 MPa (145 psi)
- Application**
P = Pharmaceutical
F = Food and Beverage
C = Chemical



BANNER INDUSTRIES IS THE EXCLUSIVE DISTRIBUTOR FOR COBETTER PRODUCTS IN THE USA
 Visit www.bannerindustries.com and select the Contact Us link to find the location nearest you. The Banner Industries of N.E., Inc. Terms and Conditions of Sale apply and are fully and expressly incorporated herein by reference and constitute a part of any contract for the purchase of the products described herein.

CBBPP1129 Rev. 06122020
 Copyright © 2020 Banner Industries, Inc. All rights reserved.