

**H-CCF SINGLE-ROUND INDUSTRIAL LIQUID FILTER HOUSINGS**

T-Line Configuration Sanitary Grade Housings for Easy Installation into Existing Tools and Locations

# H-CCF SINGLE-ROUND INDUSTRIAL LIQUID FILTER HOUSINGS

## SINGLE-ROUND FILTER HOUSING FOR LIQUID FILTRATION IN SANITARY APPLICATIONS

H-CCF Filter Housings feature T-line configuration which allows for easy installation into various tools and locations. The bowl is sanitary grade and has a finished polishing of Ra < 0.8 μm (32 μin.) making it suitable for a variety of applications. Since the housing is a compact structure, the top of the filter housing can be supported to rigid pipe. The tri-clamp connection of the housing makes it easy to remove the bowl and replace filter elements.

There is no liquid spillover during the replacement process, since the bowl can drop down after release of the clamp. In addition, the drain valve located at the bottom of the filter housing allows for easy drainage.

| FEATURE   | BENEFIT   |
|---|---|
| <b>T-line configuration with top inlet and top outlet</b> | T-line configuration allows tubing to be kept inline  |
| <b>Tri-clamp bowl connection</b>                          | No liquid spillover when replacing filter cartridges as bowl can drop down after release of clamp<br><br>Design allows for safe, easy sealing of bowl to housing head |
| <b>Drain on housing bottom</b>                            | Easy to drain   |
| <b>Quality surface finishing</b>                          | With an internal bowl Ra of 0.8 μm (32 μin.) the sanitary surface finish prevents entrapment or build-up of contaminants.   |

### SPECIFICATIONS

|                                   |   |
|-----------------------------------|---|
| <b>Surface finish</b>             | Base: Cast, Brushed; Bowl: Mechanical polished and Electropolished<br><br>Internal Ra: ≤ 0.8 μm (32 μin.) |
| <b>Housing body</b>               | 304 or 316L   |
| <b>Vent/Drain Plug</b>            | 304 or 316L   |
| <b>O-ring/gaskets</b>             | Silicone, FKM, EPDM, PTFE   |
| <b>Design pressure</b>            | 0.6 MPa (6 bar, 87 psi)   |
| <b>Max. operating temperature</b> | 90°C (194°F) / Design temperature: 140°C  |
| <b>Connections</b>                | Bowl Connection: Tri-clamp<br><br>Inlet/Outlet: 1", 3/4" FNPT, BSP, PT, BSPT<br><br>Drain: 1/4" NPT       |



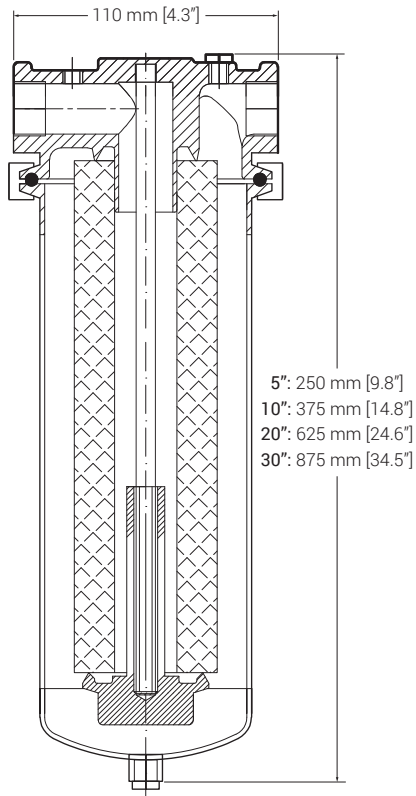
Filter mounting rod for DOE option



### TYPICAL APPLICATIONS

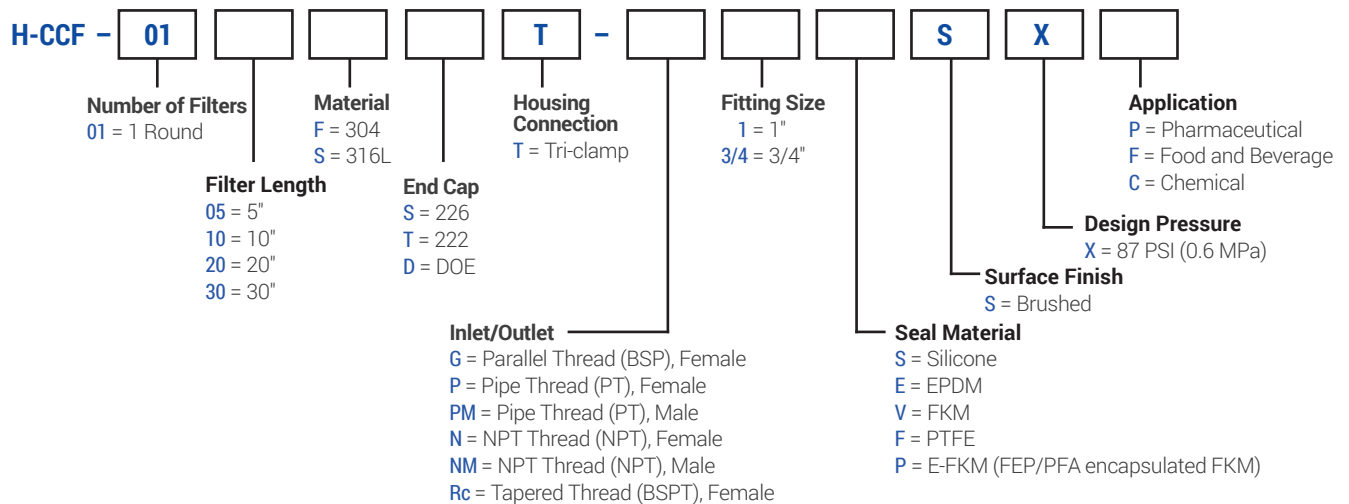
- Solvents
- Potable Liquids
- Industrial Liquids
- Coolants
- Process Water

## DIMENSIONS



## ORDERING INFORMATION

EXAMPLE: **H-CCF-0110STTN3/4VSP** = 10", 316L, 222, 3/4" Female NPT I/O, with FKM seals, pharmaceutical application



BANNER INDUSTRIES IS THE EXCLUSIVE DISTRIBUTOR FOR COBETTER PRODUCTS IN THE USA  
Visit [www.bannerindustries.com](http://www.bannerindustries.com) and select the Contact Us link to find the location nearest you. The Banner Industries of N.E., Inc. Terms and Conditions of Sale apply and are fully and expressly incorporated herein by reference and constitute a part of any contract for the purchase of the products described herein.

[www.bannerindustries.com](http://www.bannerindustries.com) | Technical Sales: [filtration@bannerindustries.com](mailto:filtration@bannerindustries.com)

CBBPP1066 Rev. 03122021  
Copyright © 2021 Banner Industries, Inc. All rights reserved.