

MODEL 79 series



FULL-FUNCTION, PRECISION WELD HEADS WITH OR WITHOUT FILLER WIRE

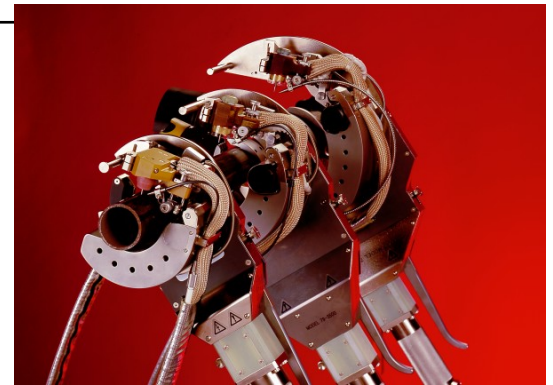
The widest range of orbital welding equipment in the world



The Model 79 series of high durability, “full function” weld heads are designed for fabrication shop and field process pipe welding applications. The Model 79 weld heads have a unique integral clamping system which gives each weld head the ability to adjust for different pipe and tubing diameters in seconds, thereby eliminating the requirement for specific sized guide rings. The M79 weld head series can accommodate a range of pipe sizes from 0.75” OD to 6.625” OD (19 mm to 170 mm) and wall thicknesses up to 0.75” (19 mm).

FEATURES

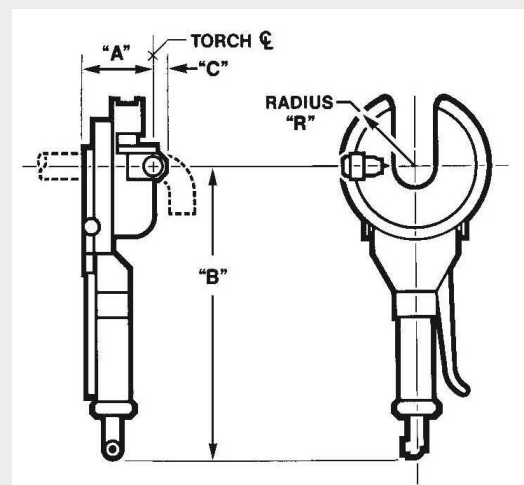
- Arc Voltage Control (AVC) for precise arc gap control.
- Programmable oscillation and precision wire feeder with wire guide positioned.
- Integral clamping system with the ability to adjust for different pipe and tubing diameters in seconds.
- Clamping mechanism allows automatic centering of the weld head on the pipe.
- Water cooled torch for 100% Duty Cycle operation.



DIMENSIONS

| Weld Head Model # | Tube/Pipe OD Range | Dimensions | | | |
|-------------------|----------------------------------|-------------------|------------------|----------------|-----------------|
| | | A | B | C | R |
| 79-2375 | 0.75" - 2.375" 19 mm - 61 mm | 4.50" * 114 mm | 16.25" 413 mm | 0.63" 16 mm | 3.43" 87 mm |
| 79-3500 | 1.00" - 3.50" 25 mm - 90 mm | 4.50" * 114 mm | 19.25" 490 mm | 0.63" 16 mm | 4.25" 108 mm |
| 79-4500 | 1.90" - 4.50" 48 mm - 114 mm | 4.50" * 114 mm | 19.25" 490 mm | 0.63" 16 mm | 5.25" 133 mm |
| 79-6625 | 2.00" - 6.625" 50 mm - 170 mm | 4.50" * 114 mm | 19.25" 490 mm | 0.63" 16 mm | 6.31" 160 mm |

* with cross-seam "in" all the way



MODEL 79 SERIES FULL-FUNCTION WELD HEADS

The Model 79 series is compatible with a variety of joint designs such as “J” prep and square butt, and will weld materials ranging from stainless or carbon steels to exotic alloys such as Hastelloy,™ Inconel,™ and Monel,™ as well as all other TIG weldable materials.

TECHNICAL SPECS



| | Model 79-2375 | Model 79-3500 | Model 79-4500 | Model 79-6625 |
|--|---|---|---|---|
| Tube/Pipe OD | 0.75" - 2.375" (19 mm - 61 mm) | 1.00" - 3.50" (25 mm - 90 mm) | 1.90" - 4.50" (48 mm - 114 mm) | 2.00" - 6.625" (50 mm - 170 mm) |
| Wall Thickness | up to 0.44" (11 mm) | up to .044" (11 mm) | up to 0.675" (17 mm) | up to 0.75" (19 mm) |
| Rotation Speed | 0.1 - 5.0 RPM | 0.05 - 2.0 RPM | 0.05 - 2.0 RPM | 0.05 - 2.0 RPM |
| Torch Adjustments lead / lag cross-seam tilt in / tilt out | +/- 5° +/- 0.25" (6,35 mm) 15° / 45° | +/- 10° +/- 0.375" (9,53 mm) 15° / 45° | +/- 10° +/- 0.375" (9,53 mm) 15° / 45° | +/- 10° +/- 0.375" (9,53 mm) 15° / 45° |
| Wire Feeder | Integral, cable-mounted 5 - 100 IPM | On-board 5 - 100 IPM | On-board 5 - 100 IPM | On-board 5 - 100 IPM |
| Wire Spool Size | 2 lbs., 4" standard spool (0,9 kg, 101,6 mm) | Low-profile standard 2 lbs., (4") optional spool | 2 lbs., 4" standard spool (0,9 kg, 101,6 mm) | 2 lbs., 4" standard spool (0,9 kg, 101,6 mm) |
| Filler Wire Size | 0.030" or 0.035" (0,762 mm or 0,889 mm) | 0.030" or 0.035" (0,762 mm or 0,889 mm) | 0.030" or 0.035" (0,762 mm or 0,889 mm) | 0.030" or 0.035" (0,762 mm or 0,889 mm) |
| Weight (less cables) | 11 lbs. (5 kg) | 14 lbs. (6,35 kg) | 16 lbs. (7,25 kg) | 22 lbs. (10 kg) |
| Torch (water-cooled) | 200A continuous Duty Cycle | 200A continuous Duty Cycle | 200A continuous Duty Cycle | 200A continuous Duty Cycle |

Compatible Power Supplies: Model 227 and Model 415

The Global Welding Company

For further information please visit our website
or contact us at 1-818-896-9556



Dynamic. Growing. Integrated.



www.arcmachines.com

www.theglobalweldingcompany.com

HEADQUARTERS

Arc Machines, Inc.

10500 Orbital Way
Pacoima, CA 91331 U.S.A.
Tel: +1 / 818 / 896 / 9556
Fax: +1 / 818 / 890 / 3724
sales@arcmachines.com

SOUTHWEST OFFICE

Arc Machines, Inc.

10650 Haddington Drive
Houston, TX 77043 U.S.A.
Tel: +1 / 818 / 896 / 9556
Fax: +1 / 818 / 890 / 3724
sales@arcmachines.com

GERMAN OFFICE

Arc Machines GmbH

Markelsbach 2
D-53804 Much, Germany
Tel: +49 / 2245 / 91680
Fax: +49 / 2245 / 916868
sales@arcmachines.de

UK OFFICE

Arc Machines UK Limited

11 Low March
Davenport, NN11 4SD, UK
Tel: +44 / 1327 / 879606
Fax: +44 / 1327 / 315034
sales@arcmachines.co.uk

INDIA OFFICE

AMI India Pvt. Ltd.

G O Square, "B" Building,
1st Floor, Aundh - Hinjewadi
Road, Wakad
Pune - 411033 MH, India
Tel: +91 / 90110 / 24331
sales@arcmachines.com